



CONTOUR INTERVAL 20 METRES

Magnetic North is approximately 9.98°E of Grid North
DCS Spatial Services has applied the Creative Commons Attribution 4.0 International Licence...

- Legend for map symbols: Route marker, Motorway, Arterial road, Distributor road, Urban service lane, Track, Dedicated bus way, Rail, Landing ground, Airport, Fire station, Police station, Building, Place of worship, Information centre, Camping ground, Golf course, Tower, Tank, Telephone exchange, Aquaculture farm, Spot height, Cave, Excavation face, Transmission line, Bore, Perennial watercourse, Non perennial watercourse, Mainly Dry watercourse, Waterbody, Mean high water mark, Lighthouse, Wharf, Rocks, Swamp, Trees, Orchard, Park, State border, State forest, Suburb, Restricted area.

Disclaimer: The publisher of and/or contributors to this publication accept no responsibility for the accuracy, completeness, or relevance to the user's purpose or omission or errors therein, any injury, loss or damage arising from its use...

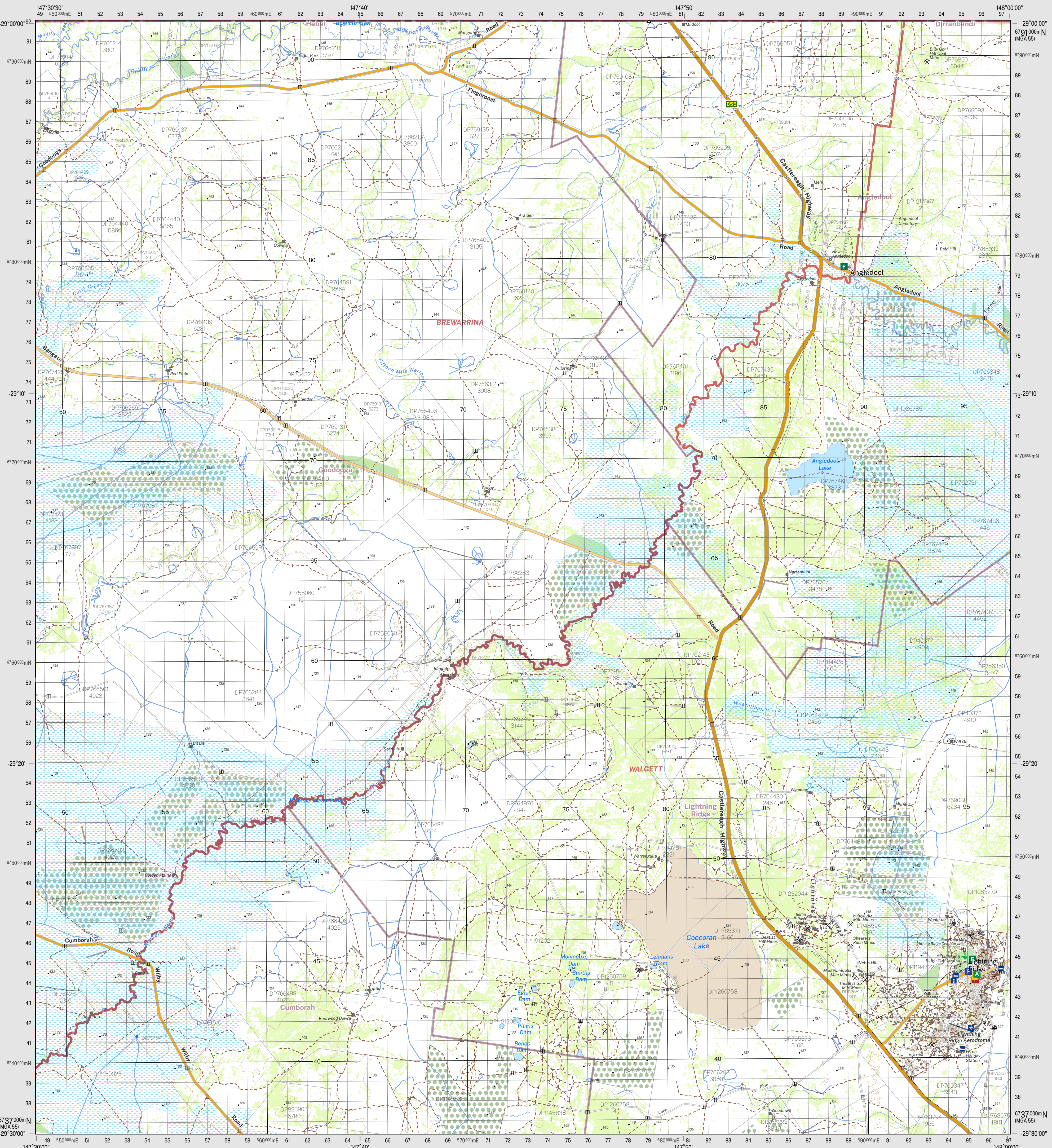
Topographic Map

LIGHTNING RIDGE
1:100 000

8439
October 2022

Map grid reference table with columns for Queensland regions: GOODWOODA 8339, LIGHTNING RIDGE 8439, DUNIMBRAL 8539, NARRAN 8338, CUMBORAH 8438, DUNGLEAR 8538.

GDA2020



LIGHTNING RIDGE 8439

THIS MAP MAY CONTAIN AUTOMATION ERRORS OR OMISSIONS.

LIGHTNING RIDGE 8439

LIGHTNING RIDGE 8439

LIGHTNING RIDGE 8439