



CONTOUR INTERVAL 20 METRES

Magnetic North is approximately 10.29° E of Grid North
DCS Spatial Services has applied the Creative Commons Attribution 4.0 International Licence...

- Legend for map symbols: Route marker, Motorway, Arterial road, Distributor road, Urban service lane, Track, Dedicated bus way, Rail, Runway, Landing ground, Airport, Fire station, Police station, Building, Information centre, Camping ground, Golf course, Tower, Tank, Telephone exchange, Aquaculture farm, Spot height, Cave, Cliff, Excavation face, Transmission line, Bore, Perennial watercourse, Mainly Dry watercourse, Waterbody, Mean high water mark, Lighthouse or beacon, Wharf, Anchorage, Intertidal flat, Rocks, Swampland, Trees, Orchard, Park, State border, Suburb, Restricted area.

Disclaimer: The publisher of and/or contributors to this publication accept no responsibility for the accuracy, completeness, or relevance to the user's purpose or omission of errors therein, any injury, loss or damage arising from its use...

The 2022 edition of the Topographic GeoPDF may differ from previously produced versions of our map series. Road and track information displayed in State Forest areas on this map was supplied by Forestry Corporation of NSW.

Topographic Map

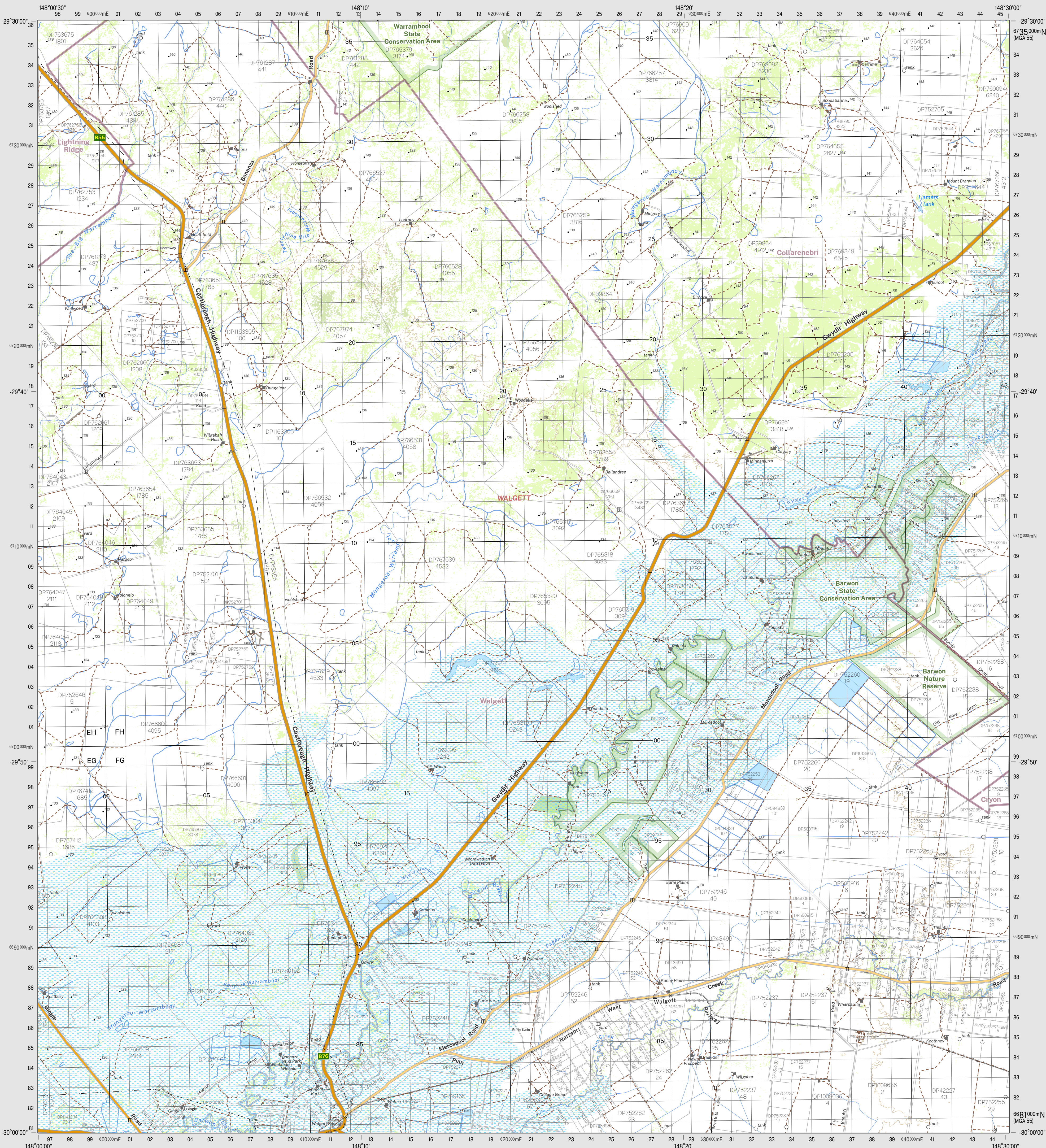
DUNGALEAR 1:100 000

8538

October 2022

Grid reference table with columns for LIGHTNING RIDGE 8439, DUNGALBAH 8538, ELLIOT 8638-N, COLLARENEBRI 8638-N, ROWENA 8638-S, WANKOURIE 8437-N, WALGETT 8537-N, BURRUM JUNCTION 8637-N, CARRINGBA 8437-S, COME BY CHANCE 8537-S, PILLIGA 8637-S.

GDA2020



DUNGALEAR 8538

THIS MAP MAY CONTAIN AUTOMATION ERRORS OR OMISSIONS.

DUNGALEAR 8538

DUNGALEAR 8538

DUNGALEAR 8538