

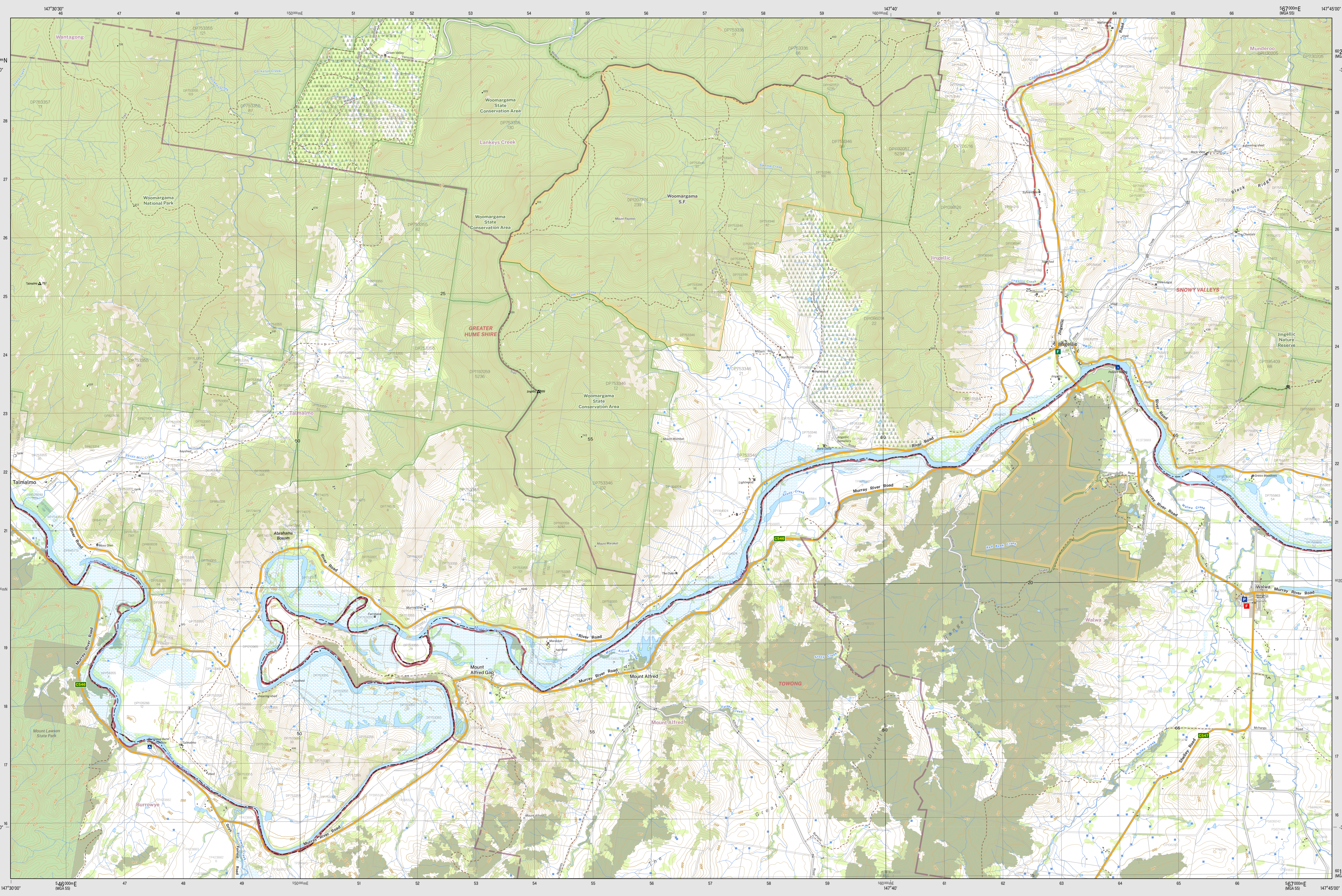
- Route marker: motorway, national, state
- Motorway, Primary road
- Arterial road: Sub arterial road with level crossing
- Distributor road, Local road with cattle grid
- Urban service lane: Accessway
- Track (vehicular with gate, Path)
- Dedicated bus way
- Rail: operational with station, under construction
- Rail: disused, dismantled
- Runway: centralline, perimeter
- Landing ground: Ferry route
- Airport: Heliport; Roadside rest area
- Ambulance; Hospital; Lifesaving club
- Fire station: urban, rural; State emergency service
- Police station: Coast guard
- Building: small, large, homestead
- Place of worship; Post office; School
- Information centre; Tourist park; Caravan park
- Camping ground; Lookout; Picnic area
- Golf course; Historic site; Monument
- Tower; Wind generator; Wind pump
- Tank yard; Mine (underground)
- Telephone exchange; Utility facility; Race track
- Aquaculture farm; Restricted area; Landmark
- Spot height; Mountain; Survey mark
- Cave; Pinnacle; Rock
- Index contour with elevation; Contour
- Cliff; Levee
- Excavation face; Mines subsidence district
- Transmission line: Cableway
- Bore; Pond; Regulator; Spring
- Perennial watercourse with lock, barrier, dam or weir
- Non perennial watercourse with waterfall, rapids
- Mainly dry watercourse; Water supply canal
- Waterbody: perennial, non perennial, mainly dry
- Mean high water mark
- Lighthouse or beacon; Breakwater
- Wharf, launching ramp or slipway; Rock
- Exchange; Wharf
- Intertidal flat; Rocks (seawash); Reef
- Rocks (inland); Sand; Cliff area
- Swamp; wet, dry; Land subject to inundation
- Trees: sparse, medium, dense
- Orchard, vineyard or crop; Pine plantation; Mangrove
- Park or reserve; Built up area
- State border; Cadastre with plan and lot number
- State forest; National park
- Suburb; Local government area
- Restricted area

Disclaimer: The publisher of any/or contributors to this publication accept no responsibility for the accuracy, completeness, reliability or use of any data, information, or services, or for any errors, omissions, loss or damage arising from its use. While all care is taken to ensure a high degree of accuracy, users are advised to verify any discrepancies and to use the 2022 edition of the Topographic Geographical Information System (GIS) data for any application.

Road and track information displayed in State Forest Areas on this map was supplied by Forestry Corporation of NSW.

Victoria coast border data has been sourced in accordance with CC BY license terms.

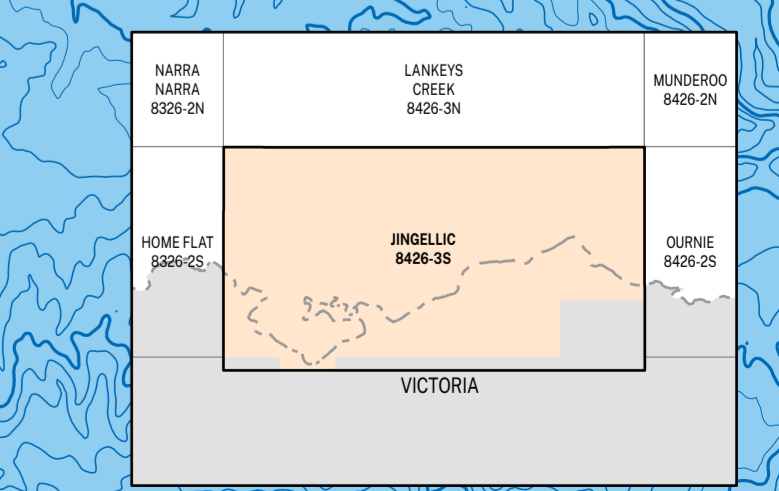
Victoria Data: © State of Victoria (Department of Environment, Land, Water and Planning)



Topographic Map

JINGELIC
1:25 000

8426-3S
October 2022



THIS MAP MAY CONTAIN AUTOMATION ERRORS OR OMISSIONS.

JINGELIC 8426-3S

JINGELIC 8426-3S