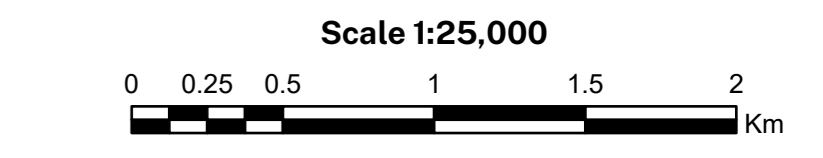
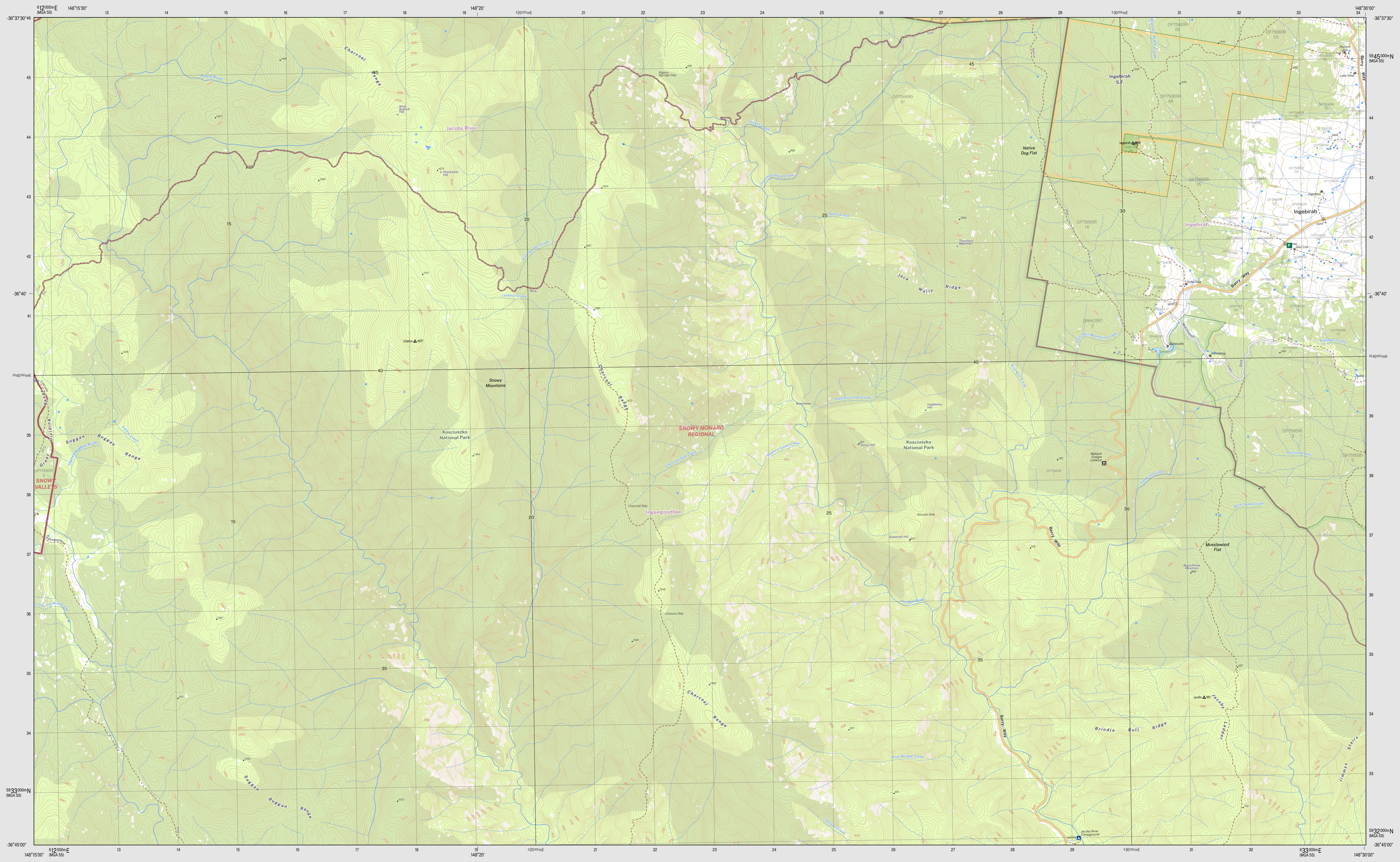


CHARCOAL RANGE 8524-1S

THIS MAP MAY CONTAIN AUTOMATION ERRORS OR OMISSIONS.

CHARCOAL RANGE 8524-1S



CONTOUR INTERVAL 10 METRES
Magnetic North is approximately 12.84°E of Grid North

DCS Spatial Services has applied the Creative Commons Attribution 4.0 International License. DCS Spatial Services asserts the right to be attributed as author of the original material in the following manner: © State of New South Wales Spatial Services, a business unit of the Department of Customer Service NSW. For current information go to <https://www.spatial.nsw.gov.au/geography>

	Route marker: motorway, national, state
	Motorway: Primary road
	Arterial road: Sub arterial road with level crossing
	Distributor road: Local road with cattle grid
	Urban service lane: Access way
	Track (vehicular) with gate: Path
	Dedicated bus way
	Rail: operational with station, under construction
	Railway: cutting, barrier
	Landing ground: Ferry route
	Airport: Heliport: Roadside rest area
	Ambulance: Hospital: Lifesaving club
	Fire station: urban, rural: State emergency service
	Police station: Coast guard
	Building: small, large, homestead
	Place of worship: Post office: School
	Information centre: Tourist park: Caravan park
	Camping ground: Lookout: Picnic area
	Golf course: Historic site: Monument
	Tower: Wind generator: Wind pump
	Tank: Yard: Mine (underground)
	Telephone exchange: Utility facility: Race track
	Aquaculture farm: Restricted area: Landmark
	Spot height: Mountain: Survey mark
	Cave: Pinnacle: Rock
	Index contour: with elevation: Contour
	Cliff: Levee
	Excavation face: Mines subsidence district
	Transmission line: Cableway
	Bore: Pond: Regulator: Spring
	Perennial watercourse: with lock, barrier, dam or weir
	Non perennial watercourse: with water fall, rapids
	Mainly dry watercourse: Water supply canal
	Waterbody: perennial, non perennial, mainly dry
	Mean high water mark
	Lighthouse or beacon: Breakwater
	Wharf: launching ramp or slipway: Rock
	Anchorage: Wreck
	Intertidal flat: Rocks (awash): Reef
	Rocks (inland): Sand: Cliff area
	Swamp: wet, dry: Land subject to inundation
	Trees: sparse, medium, dense
	Orchard: vineyard or crop: Pine plantation: Mangrove
	Park or reserve: Built up area:
	State border: Cadastre with plan and lot number
	State forest: National park
	Suburb: Local government area
	Restricted Area

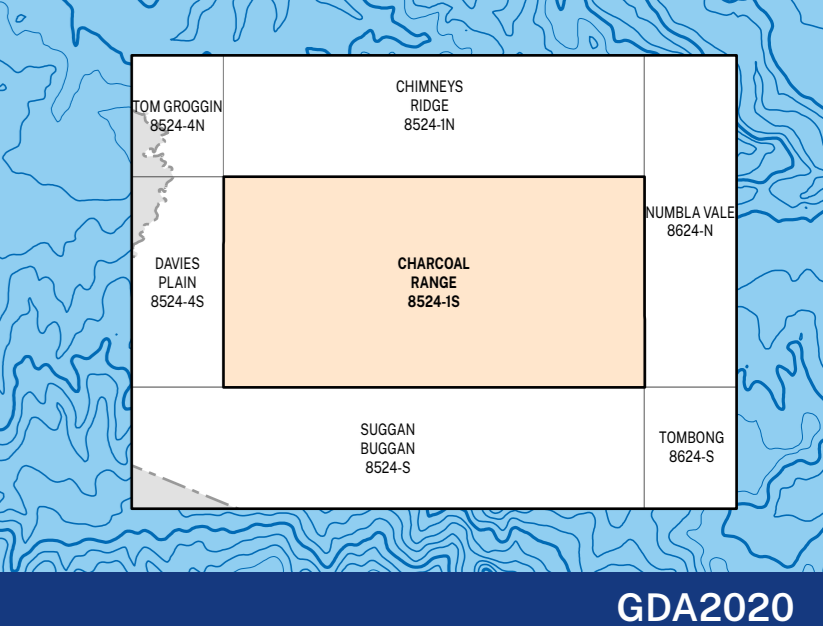
Disclaimer: The publisher of and/or contributors to this publication accept no responsibility for the accuracy, completeness, or reliance to the user's purpose or omission or errors therein, any injury, loss or damage arising from its use. While all care is taken to ensure a high degree of accuracy, users are invited to verify any discrepancies and should use this map with due care.

The 2022 edition of the Topographic GeoPDF may differ from previously produced versions of our map series. Road and track information depicted in State Forest Areas on this map was supplied by Forestry Corporation of NSW.

Topographic Map

CHARCOAL RANGE
1:25 000

8524-1S
October 2022



GDA2020