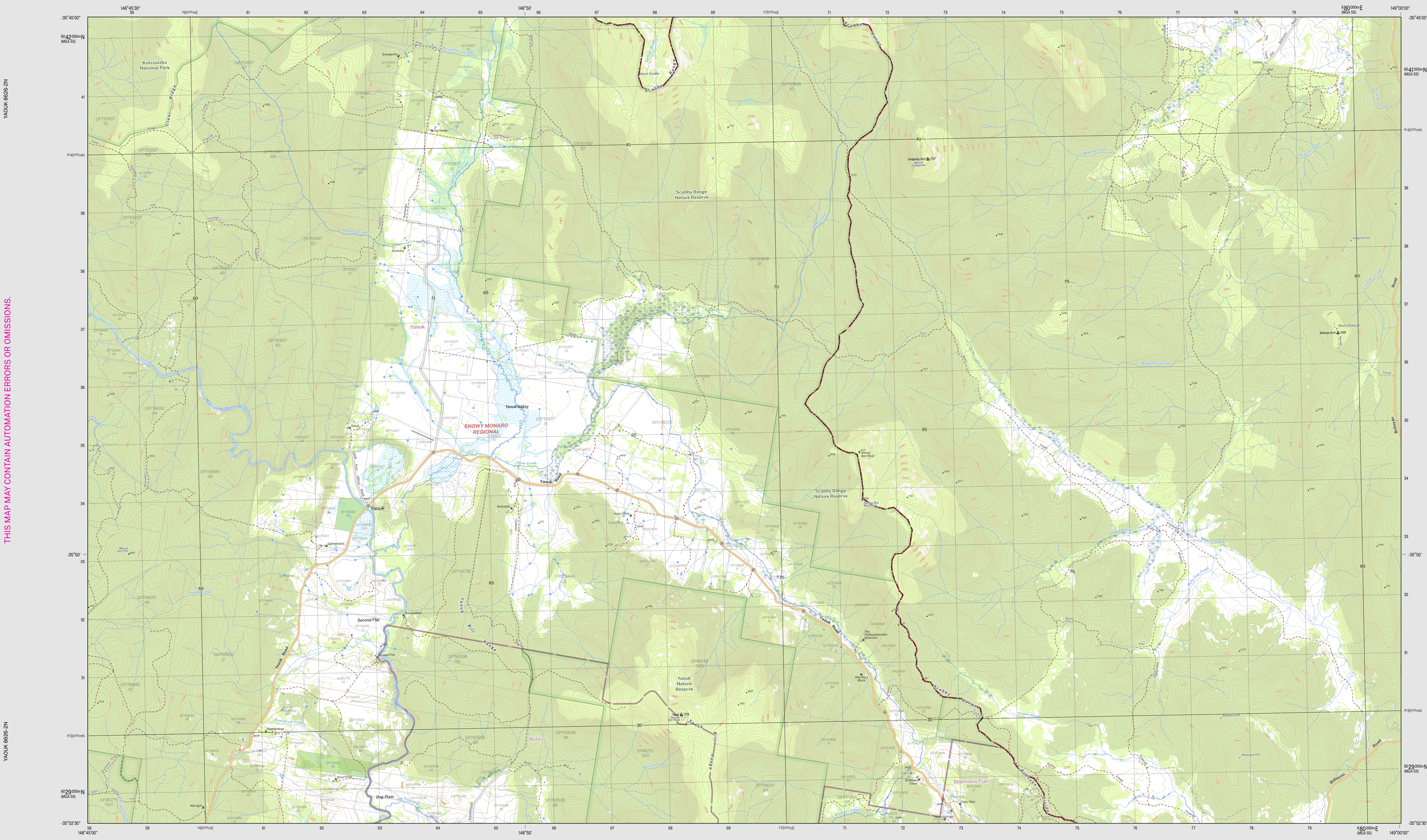


THIS MAP MAY CONTAIN AUTOMATION ERRORS OR OMISSIONS.

YAOUK 8626-2N

YAOUK 8626-2N



Scale 1:25,000

0 0.25 0.5 1 1.5 2 Km

CONTOUR INTERVAL 10 METRES

Magnetic North is approximately 12.67° E of Grid North

DCS Spatial Services has applied the Creative Commons Attribution 4.0 International License. DCS Spatial Services asserts the right to be attributed as author of the original material in the following manner: © State of New South Wales Spatial Services, a business unit of the Department of Customer Service NSW. For current information go to <https://www.spatial.nsw.gov.au/geography>

| | |
|--|---|
| | Route marker: motorway, national, state |
| | Motorway: Primary road |
| | Arterial road: Sub arterial road with level crossing |
| | Distributor road: Local road with cattle grid |
| | Urban service lane: Access way |
| | Track (vehicular) with gate: Path |
| | Dedicated bus way |
| | Rail: operational with station, under construction |
| | Rail: disused, dismantled |
| | Runway: controlled, uncontrolled |
| | Landing ground: Ferry route |
| | Airport: Heliport: Roadside rest area |
| | Ambulance: Hospital: Lifesaving club |
| | Fire station: urban, rural: State emergency service |
| | Police station: Coast guard |
| | Building: small, large, homestead |
| | Place of worship: Post office: School |
| | Information centre: Tourist park: Caravan park |
| | Camping ground: Lookout: Picnic area |
| | Golf course: Historic site: Monument |
| | Tower: Wind generator: Wind pump |
| | Tank: Yard: Mine (underground) |
| | Telephone exchange: Utility facility: Race track |
| | Aquaculture farm: Restricted area: Landmark |
| | Spot height: Mountain: Survey mark |
| | Cave: Pinnacle: Rock |
| | Index contour with elevation: Contour |
| | Cliff: Levee |
| | Excavation face: Mines subsidence district |
| | Transmission line: Cableway |
| | Bore: Pond: Regulator: Spring |
| | Perennial watercourse with lock, barrier, dam or weir |
| | Non perennial watercourse with water fall, rapids |
| | Mainly Dry watercourse: Water supply canal |
| | Waterbody: perennial, non perennial, mainly dry |
| | Mean high water mark |
| | Lighthouse or beacon: Breakwater |
| | Wharf: launching ramp or slipway: Rock |
| | Anchorage: Wreck |
| | Intertidal flat: Rocks (awash): Reef |
| | Rocks (inland): Sand: Cliff area |
| | Swamp: wet, dry: Land subject to inundation |
| | Trees: sparse, medium, dense |
| | Orchard: vineyard or crop: Pine plantation: Mangrove |
| | Park or reserve: Built up area: |
| | State border: Cadastre with plan and lot number |
| | State forest: National park |
| | Suburb: Local government area |
| | Restricted Area |

Disclaimer: The publisher of and/or contributors to this publication accept no responsibility for the accuracy, completeness, or reliance to the user's purpose or omission or errors therein, any injury, loss or damage arising from its use. While all care is taken to ensure a high degree of accuracy, users are invited to verify any discrepancies and should use this map with due care.

The 2022 edition of the Topographic GeopDF may differ from previously produced versions of our map series.

Road and track information displayed in State Forest Areas on the map was supplied by Forestry Corporation of NSW.

Topographic Map

YAOUK
1:25 000

8626-2N

October 2022

GDA2020

