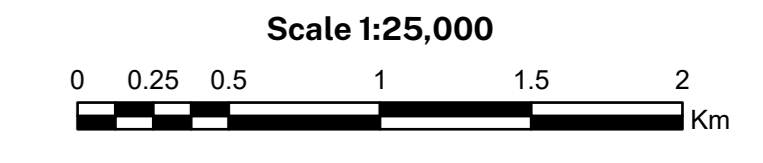
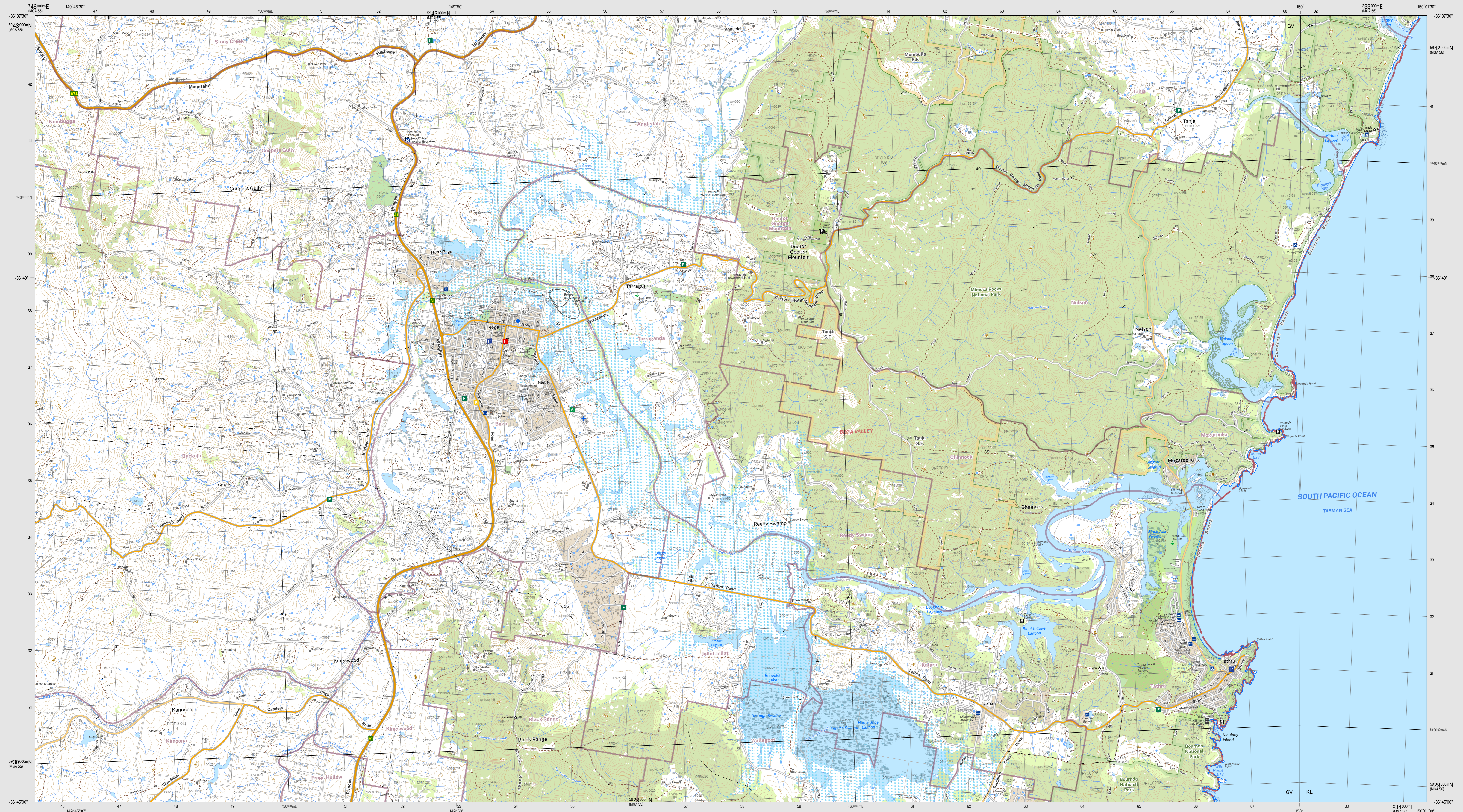


BEGA 8824-1S

THIS MAP MAY CONTAIN AUTOMATION ERRORS OR OMISSIONS.

BEGA 8824-1S



- Scale 1:25,000**
- CONTOUR INTERVAL 10 METRES**
- Magnetic North is approximately 13.45° E of Grid North
- © Crown Copyright 2022. All Rights Reserved. This map is published under the Creative Commons Attribution 4.0 International License. DCS Spatial Services asserts the right to be attributed as the publisher of this map. For more information, please contact the Department of Customer Service (Special Services, a business unit of the Department of Customer Service NSW). For current information, go to www.spatial.nsw.gov.au/copyright
- Route marker: motorway, national, state
 - Motorway/Primary road
 - Arterial road: Sub arterial road with level crossing
 - Distributor road, Local road with cattle grid
 - Urban service lane, Access way
 - Track (vehicular) with gate: Path
 - Dedicated bus way
 - Rail: operational with station, under construction
 - Rail: disused, dismantled
 - Runway: conventional, perimeter
 - Landing ground: Ferry route
 - Airport: Heliport; Roadside rest area
 - Ambulance; Hospital; Lifesaving club
 - Fire station: urban, rural; State emergency service
 - Police station; Coast guard
 - Building: small, large, homestead
 - Place of worship; Post office; School
 - Information centre; Tourist park; Caravan park
 - Camping ground; Lookout; Picnic area
 - Golf course; Historic site; Monument
 - Tower; Wind generator; Wind pump
 - Tank; Yard; Mine underground
 - Telephone exchange; Utility facility; Race track
 - Aquaculture farm; Restricted area; Landmark
 - Spot height; Mountain; Survey mark
 - Cave; Pinnacle; Rock
 - Index contour with elevation; Contour
 - Cliff; Levee
 - Excavation face; Mines subsidence district
 - Transmission line; Cableway
 - Bore; Pond; Regulator; Spring
 - Perennial watercourse with lock, barrier, dam or weir
 - Non perennial watercourse with waterfall, rapids
 - Mainly Dry watercourse: Water supply canal
 - Waterbody: perennial, non perennial, mainly dry
 - Mean high water mark
 - Lighthouse or beacon; Breakwater
 - Wharf, launching ramp or slipway; Rock
 - Anchorage; Wharf; Jetty
 - Intertidal flat; Rocks (awash); Reef
 - Rocks (land); Sand; Cliff area
 - Swamp; wet, dry; Land subject to inundation
 - Trees: sparse, medium, dense
 - Orchard; vineyard or crop; Pine plantation; Mangrove
 - Park or reserve; Built up area
 - State border; Cadastre with plan and lot number
 - State forest; National park
 - Suburb; Local government area
 - Restricted area

Disclaimer: The publisher of this map and/or contributors to this publication accept no responsibility for the accuracy, completeness, or reference to the user's purpose or omission or errors therein, any risks, loss or damage arising from the use of this map or data. The publisher and/or contributors accept no responsibility for any errors or omissions and should use the map with due care.

The 2022 edition of the Topographic Grid™ may differ from previously produced versions of our map series. Road and track information displayed in State Forest Areas on this map was supplied by Forestry Corporation of NSW.

Topographic Map

BEGA
1:25 000

8824-1S
October 2022

