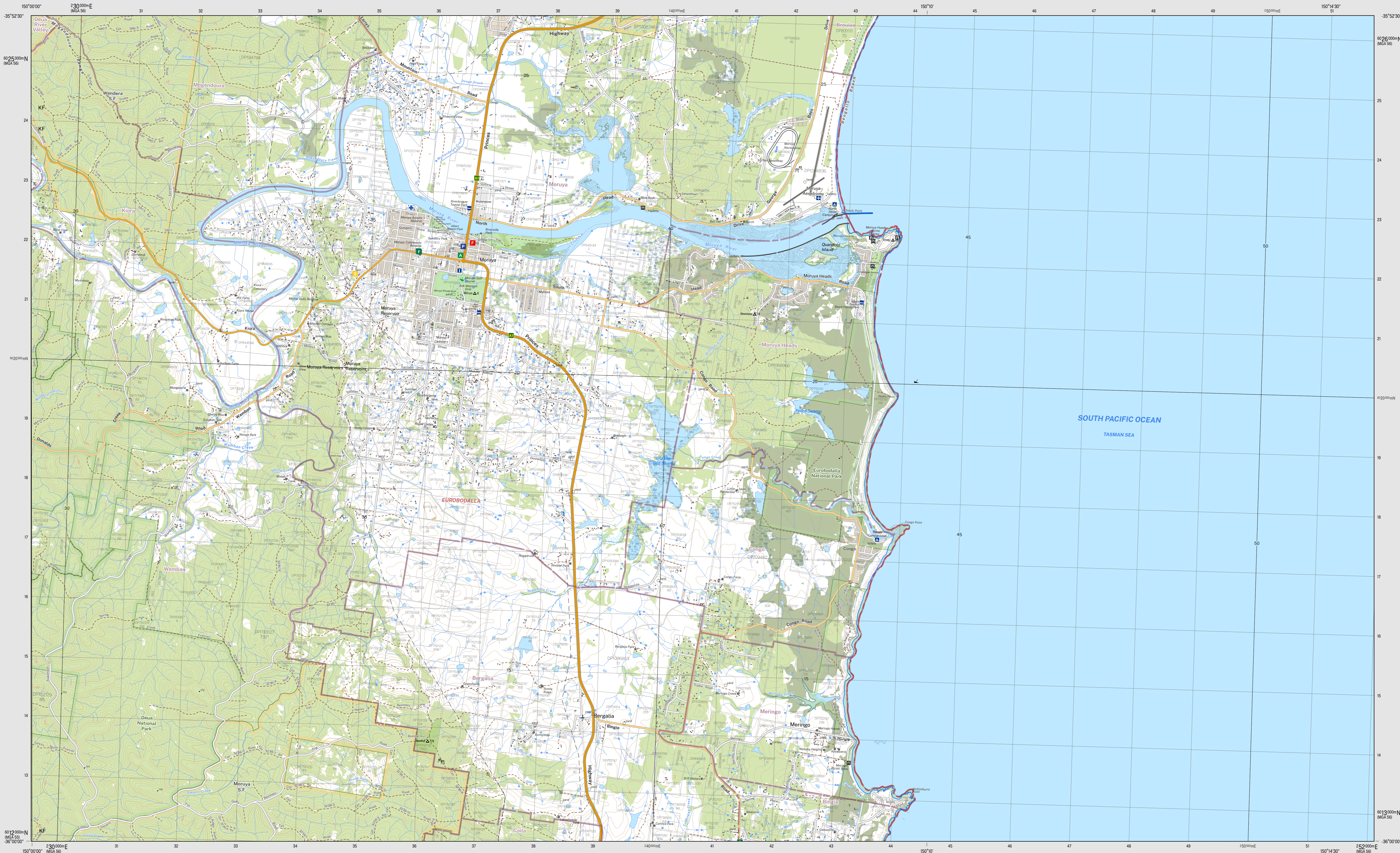


MORUYA 8926-3S
THIS MAP MAY CONTAIN AUTOMATION ERRORS OR OMISSIONS.
MORUYA 8926-3S



Scale 1:25,000
0 0.25 0.5 1 1.5 2 Km

CONTOUR INTERVAL 10 METRES
Magnetic North is approximately 13.21°E of Grid North

DCS Spatial Services has applied the Creative Commons Attribution 4.0 International License. DCS Spatial Services asserts the right to be attributed as author of the original material in the following manner: © State of New South Wales (Spatial Services), a business unit of the Department of Customer Service NSW. For current information go to <https://www.spatial.nsw.gov.au/geography>

Route marker: motorway, national, state	Route marker: motorway, national, state
Motorway; Primary road	Arterial road; Sub arterial road with level crossing
Arterial road; Sub arterial road with level crossing	Distributor road; Local road with cattle grid
Distributor road; Local road with cattle grid	Urban service lane; Access way
Urban service lane; Access way	Track (vehicular) with gate; Path
Track (vehicular) with gate; Path	Dedicated bus way
Dedicated bus way	Rail: operational with station, under construction
Rail: operational with station, under construction	Rail: disused, dismantled
Rail: disused, dismantled	Runway: concrete, asphalt
Runway: concrete, asphalt	Landing ground; Ferry route
Landing ground; Ferry route	Airport; Heliport; Roadside rest area
Airport; Heliport; Roadside rest area	Ambulance; Hospital; Lifesaving club
Ambulance; Hospital; Lifesaving club	Fire station: urban, rural; State emergency service
Fire station: urban, rural; State emergency service	Police station; Coast guard
Police station; Coast guard	Building: small, large, homestead
Building: small, large, homestead	Place of worship; Post office; School
Place of worship; Post office; School	Information centre; Tourist park; Caravan park
Information centre; Tourist park; Caravan park	Camping ground; Lookout; Picnic area
Camping ground; Lookout; Picnic area	Golf course; Historic site; Monument
Golf course; Historic site; Monument	Tower; Wind generator; Wind pump
Tower; Wind generator; Wind pump	Tank; Yard; Mine (underground)
Tank; Yard; Mine (underground)	Telephone exchange; Utility facility; Race track
Telephone exchange; Utility facility; Race track	Aquaculture farm; Restricted area; Landmark
Aquaculture farm; Restricted area; Landmark	Spot height; Mountain; Survey mark
Spot height; Mountain; Survey mark	Cave; Pinnacle; Rock
Cave; Pinnacle; Rock	Index: contour with elevation; Contour
Index: contour with elevation; Contour	Cliff; Levee
Cliff; Levee	Excavation face; Mines subsidence district
Excavation face; Mines subsidence district	Transmission line; Cableway
Transmission line; Cableway	Bore; Pond; Regulator; Spring
Bore; Pond; Regulator; Spring	Perennial watercourse with lock, barrier, dam or weir
Perennial watercourse with lock, barrier, dam or weir	Non perennial watercourse with water fall, rapids
Non perennial watercourse with water fall, rapids	Mainly Dry watercourse; Water supply canal
Mainly Dry watercourse; Water supply canal	Waterbody; perennial, non perennial, mainly dry
Waterbody; perennial, non perennial, mainly dry	Mean high water mark
Mean high water mark	Lighthouse or beacon; Breakwater
Lighthouse or beacon; Breakwater	Wharf; launching ramp or slipway; Rock
Wharf; launching ramp or slipway; Rock	Anchorage; Wreck
Anchorage; Wreck	Intertidal flat; Rocks (awash); Reef
Intertidal flat; Rocks (awash); Reef	Rocks (inland); Sand; Cliff area
Rocks (inland); Sand; Cliff area	Swamp; wet, dry; Land subject to inundation
Swamp; wet, dry; Land subject to inundation	Trees: sparse, medium, dense
Trees: sparse, medium, dense	Orchard; vineyard or crop; Pine plantation; Mangrove
Orchard; vineyard or crop; Pine plantation; Mangrove	Park or reserve; Built up area;
Park or reserve; Built up area;	State border; Cadastre with plan and lot number
State border; Cadastre with plan and lot number	State forest; National park
State forest; National park	Suburb; Local government area
Suburb; Local government area	Restricted Area

Disclaimer: The publisher of and/or contributors to this publication accept no responsibility for the accuracy, completeness, or relevance to the user's purpose or omission or errors therein, any injury, loss or damage arising from its use. While all care is taken to ensure a high degree of accuracy, users are invited to verify any discrepancies and should use this map with due care.

The 2022 edition of the Topographic GeoPDF may differ from previously produced versions of our map series.

Road and track information displayed in State Forest Areas on this map was supplied by Forestry Corporation of NSW.

Topographic Map

MORUYA
1:25 000

8926-3S
October 2022

GDA2020

