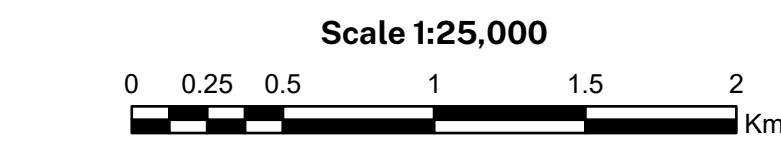


THIS MAP MAY CONTAIN AUTOMATION ERRORS OR OMISSIONS.



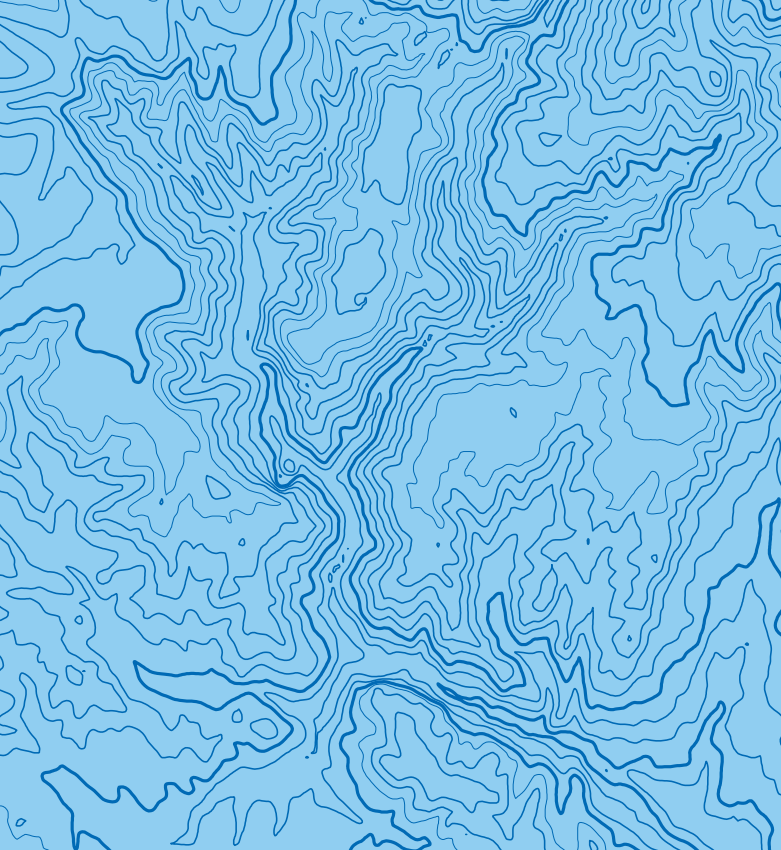
- Motorway; Primary road
- Arterial road; Sub arterial road with level crossing
- Distributor road; Local road with cattle grid
- Urban service lane; Access way
- Track (vehicular) with gate; Path
- Dedicated bus way
- Rail: operational with station, under construction
- Rail: disused, dismantled
- Runway; airstrip; airfield
- Landing ground; Ferry route
- Airport; Heliport; Roadside rest area
- Ambulance; Hospital; Lifesaving club
- Fire station: urban, rural; State emergency service
- Police station; Coast guard
- Building: small, large, homestead
- Place of worship; Post office; School
- Information centre; Tourist park; Caravan park
- Camping ground; Lookout; Picnic area
- Golf course; Historic site; Monument
- Tower; Wind generator; Wind pump
- Tank; Yard; Mine (underground)
- Telephone exchange; Utility facility; Race track
- Aquaculture farm; Restricted area; Landmark
- Spot height; Mountain; Survey mark
- Cave; Pinnacle; Rock
- Index contour with elevation; Contour
- Cliff; Levee
- Excavation face; Mines subsidence district
- Transmission line; Cableway
- Bore; Pond; Regulator; Spring
- Perennial watercourse with lock, barrier, dam or weir
- Non perennial watercourse with water fall, rapids
- Mainly Dry watercourse; Water supply canal
- Waterbody; perennial, non perennial, mainly dry
- Mean high water mark
- Lighthouse or beacon; Breakwater
- Wharf; launching ramp or slipway; Rock
- Anchorage; Wreck
- Intertidal flat; Rocks (awash); Reef
- Rocks (inland); Sand; Cliff area
- Swamp; wet, dry; Land subject to inundation
- Trees: sparse, medium, dense
- Orchard; vineyard or crop; Pine plantation; Mangrove
- Park or reserve; Built up area;
- State border; Cadastre with plan and lot number
- State forest; National park
- Suburb; Local government area
- Restricted Area

Disclaimer: The publisher of and/or contributors to this publication accept no responsibility for the accuracy, completeness, or reliance to the user's purpose or omission or errors therein, any injury, loss or damage arising from its use. While all care is taken to ensure a high degree of accuracy, users are invited to verify any discrepancies and should use this map with due care.
The 2022 edition of the Topographic GeopDF may differ from previously produced versions of our map series.
Road and track information depicted in State Forest Areas on the map was supplied by Forestry Corporation of NSW.

Topographic Map

THALGARRAH
1:25 000

9237-2S
October 2022



BLACK MOUNTAIN 9237-2N	GLETON 9237-2N	LYNDHURST 9237-2N
DUMARESQUE 9237-2S	THALGARRAH 9237-2S	MARLEN CREEK 9237-2S
ARMIDALE 9236-4N	HILGROVE 9236-4N	JEOLA 9236-4N

GDA2020

