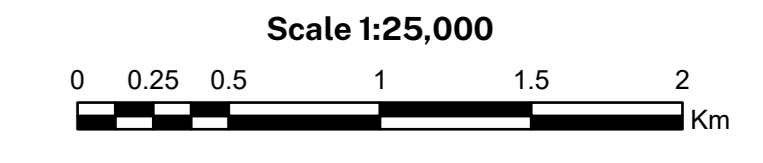
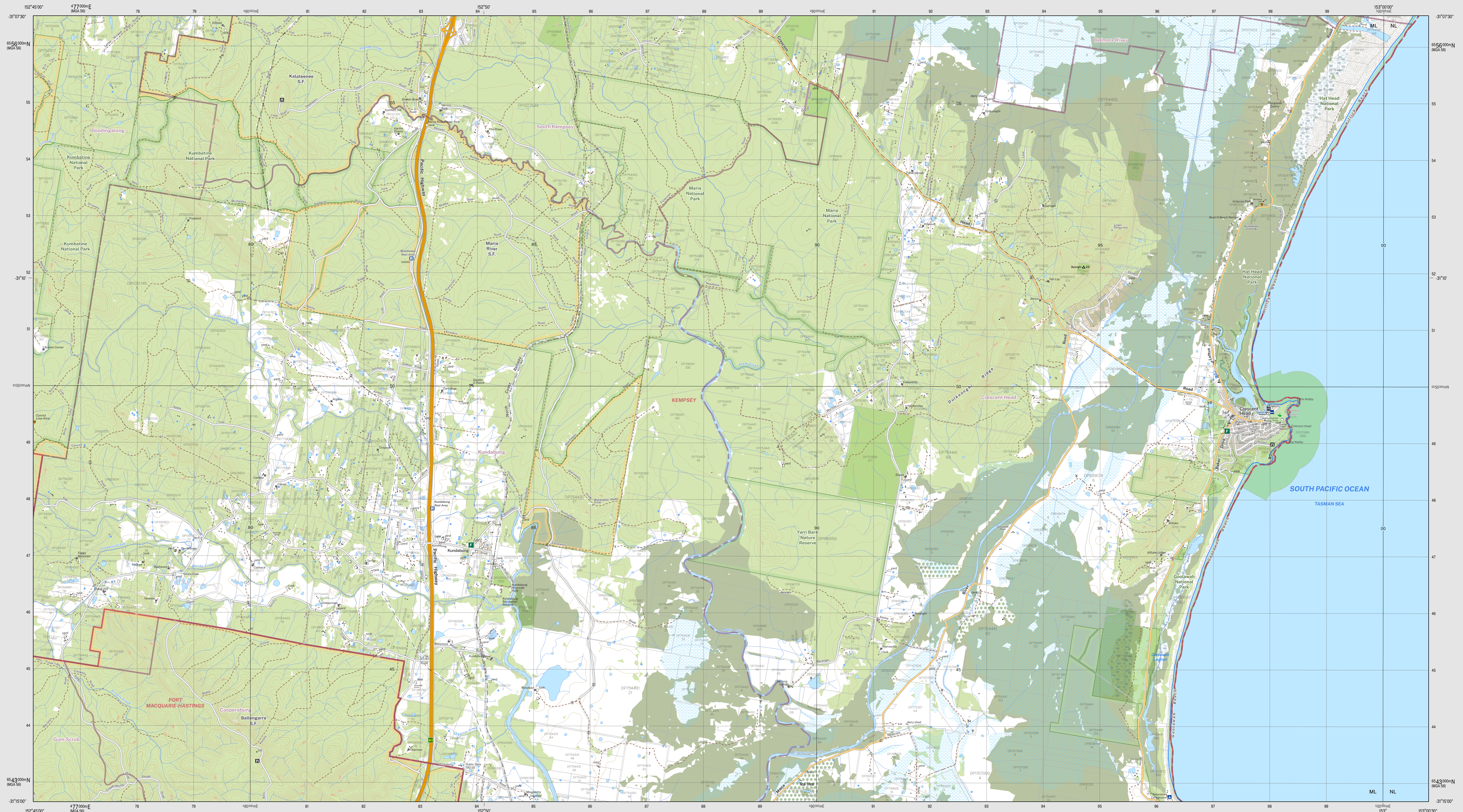


KUNDABUNG 9435-1S

THIS MAP MAY CONTAIN AUTOMATION ERRORS OR OMISSIONS.

KUNDABUNG 9435-1S



- Scale 1:25,000**
- CONTOUR INTERVAL 10 METRES**
- Magnetic North is approximately 12.28° E of Grid North
- © Crown Copyright 2022. All Rights Reserved. This map is published under the Creative Commons Attribution 4.0 International License. DCS Spatial Services asserts the right to be attributed as the author of this work and to prevent others from distributing or creating derivative works of this work without the prior written consent of DCS Spatial Services, a business unit of the Department of Customer Service NSW. For more information go to www.spatial.nsw.gov.au/copyright
- Route marker: motorway, national, state
 - Motorway/Primary road
 - Arterial road: Sub arterial road with level crossing
 - Distributor road, Local road with cattle grid
 - Urban service lane, Access way
 - Track (vehicular) with gate; Path
 - Dedicated bus way
 - Rail: operational with station, under construction
 - Rail: disused, dismantled
 - Runway: conventional, perimeter
 - Landing ground; Ferry route
 - Airport; Heliport; Roadside rest area
 - Ambulance; Hospital; Lifesaving club
 - Fire station: urban, rural; State emergency service
 - Police station; Coast guard
 - Building: small, large, homestead
 - Place of worship; Post office; School
 - Information centre; Tourist park; Caravan park
 - Camping ground; Lookout; Picnic area
 - Golf course; Historic site; Monument
 - Tower; Wind generator; Wind pump
 - Tank; Yard; Mine underground
 - Telephone exchange; Utility facility; Race track
 - Aquaculture farm; Restricted area; Landmark
 - Spot height; Mountain; Survey mark
 - Cave; Pinnacle; Rock
 - Index contour with elevation; Contour
 - Cliff; Levee
 - Excavation face; Mines subsidence district
 - Transmission line; Cableway
 - Sewer; Pond; Regulator; Spring
 - Perennial watercourse with lock, barrier, dam or weir
 - Non perennial watercourse with waterfall, rapids
 - Mainly Dry watercourse: Water supply canal
 - Waterbody: perennial, non perennial, mainly dry
 - Mean high water mark
 - Lighthouse or beacon; Breakwater
 - Wharf, launching ramp or slipway; Rock
 - Anchorage; Wharf
 - Intertidal flat; Rocks (seawash); Reef
 - Rocks (inland); Sand; Cliff area
 - Swamp; wet, dry; Land subject to inundation
 - Trees: sparse, medium, dense
 - Orchard; vineyard or crop; Pine plantation; Mangrove
 - Park or reserve; Built up area;
 - State border; Cadastre with plan and lot number
 - State forest; National park
 - Suburb; Local government area
 - Restricted area
- Disclaimer: The publisher and/or contributors to this publication accept no responsibility for the accuracy, completeness, or reference to the user's purpose or omission or errors therein, any delay, loss or damage arising from the use. While all care is taken to ensure a high degree of accuracy, users are invited to verify any discrepancies and should use the map with care.
- The 2022 edition of the Topographic Grid™ may differ from previously produced versions of our map series. Road and track information depicted in State Road Areas on this map was supplied by Forestry Corporation of NSW.

Topographic Map

KUNDABUNG
1:25 000

9435-1S
October 2022

