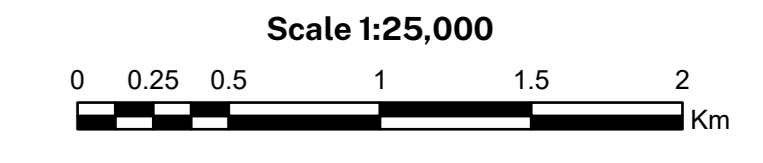
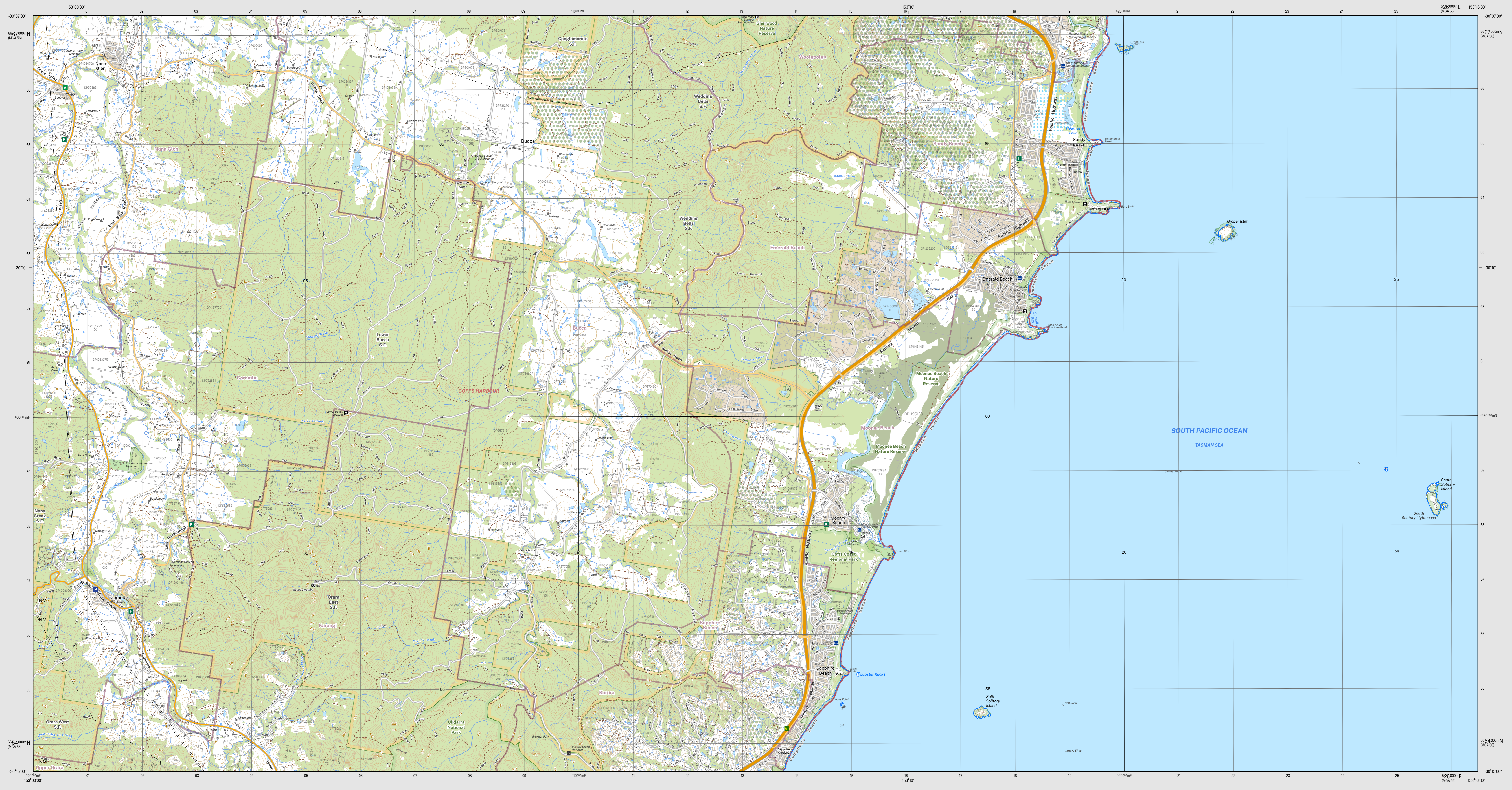


MOONEE BEACH 9537-4S

THIS MAP MAY CONTAIN AUTOMATION ERRORS OR OMISSIONS.

MOONEE BEACH 9537-4S



**CONTOUR INTERVAL 10 METRES**  
 Magnetic North is approximately 12.01° E of Grid North.  
 © Crown Copyright 2022. All rights reserved. This map is published under the Creative Commons Attribution-NonCommercial-ShareAlike license. For more information, visit <https://www.dpi.nsw.gov.au/australian-topographic-data>.

- Route marker: motorway, national, state
- Motorway/Primary road
- Arterial road: Sub arterial road with level crossing
- Distributor road, Local road with cattle grid
- Urban service lane: Access way
- Track (vehicular) with gate: Path
- Dedicated bus way
- Rail: operational with station, under construction
- Rail: disused, dismantled
- Runway: conventional, passenger
- Landing ground: Ferry route
- Airport: Heliport: Roadside rest area
- Ambulance: Hospital: Lifesaving club
- Fire station: urban, rural: State emergency service
- Police station: Coast guard
- Building: small, large, homestead
- Place of worship: Post office: School
- Information centre: Tourist park: Caravan park
- Camping ground: Lookout: Picnic area
- Golf course: Historic site: Monument
- Tower: Wind generator: Wind pump
- Tank: Yard: Mine underground
- Telephone exchange: Utility facility: Race track
- Aquaculture farm: Restricted area: Landmark
- Spot height: Mountain: Survey mark
- Cave: Pinnacle: Rock
- Index contour with elevation: Contour
- Cliff: Levee
- Excavation face: Mines subsidence district
- Transmission line: Cableway
- Sewer: Pond: Regulator: Spring
- Perennial watercourse with lock, barrier, dam or weir
- Non perennial watercourse with waterfall, rapids
- Mainly Dry watercourse: Water supply canal
- Waterbody: intermittent, non perennial, mainly dry
- Mean high water mark
- Lighthouse or beacon: Breakwater
- Wharf, launching ramp or slipway: Rock
- Anchorage: Wharf
- Intertidal flat: Rocks (seawash): Reef
- Rocks (inland): Sand: Cliff area
- Swamp: wet, dry: Land subject to inundation
- Trees: sparse, medium, dense
- Orchard, vineyard or crop: Pine plantation: Mangrove
- Park or reserve: Built up area:
- State border: Cadastre with plan and lot number
- State forest: National park
- Suburb: Local government area
- Restricted area

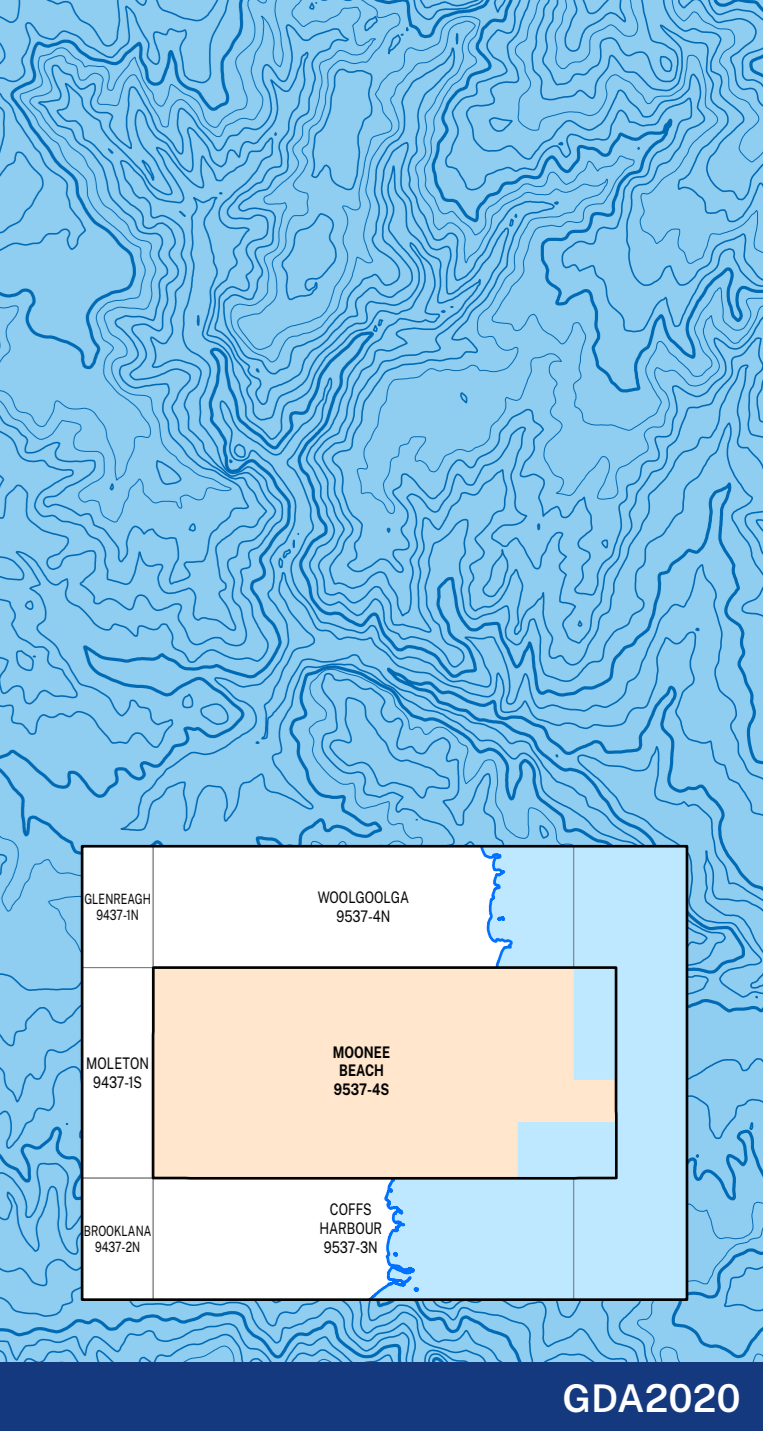
Disclaimer: The publisher of and/or contributors to this publication accept no responsibility for the accuracy, completeness, or reference to the user's purpose or omission or errors therein, any errors, loss or damage arising from the use of this map or data is taken where a high degree of accuracy is needed to rely on any information and should use the map with due care.

The 2022 edition of the Topographic Grid® map may differ from previously produced versions of our map series. Road and track information updated in State Forest Areas on this map was supplied by Forestry Corporation of NSW.

## Topographic Map

**MOONEE BEACH**  
 1:25 000

**9537-4S**  
 October 2022



GDA2020

