



CONTOUR INTERVAL 20 METRES

Magnetic North is approximately 10.17° E of Grid North
DCS Spatial Services has applied the Creative Commons Attribution 4.0 International Licence...

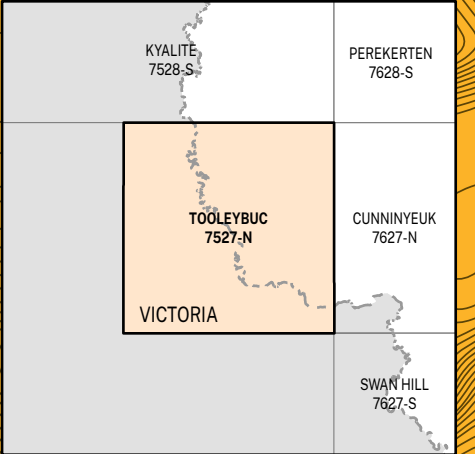
- Route marker: motorway, national, state
Motorway; Primary road
Arterial road; Sub arterial road with level crossing
Distributor road; Local road with cattle grid
Urban service lane; Access way
Track (vehicular) with gate; Path
Dedicated bus way
Rail: operational with station, under construction
Rail: disused, dismantled
Runway: centreline, perimeter
Landing ground; Ferry route
Airport; Heliport; Roadside rest area
Ambulance; Hospital; Lifesaving club
Fire station: urban, rural; State emergency service
Police station; Coast guard
Building: small, large, homestead
Place of worship; Post office; School
Information centre; Tourist park; Caravan park
Camping ground; Lookout; Picnic area
Golf course; Historic site; Monument
Tower; Wind generator; Wind pump
Tank; Yard; Mine (underground)
Telephone exchange; Utility facility; Race track
Aquaculture farm; Restricted area; Landmark
Spot height; Mountain; Survey mark
Cave; Pinnacle; Rock
Index contour with elevation; Contour
Cliff; Levee
Excavation face; Mines subsidence district
Transmission line; Cableway
Bore; Pond; Regulator; Spring
Perennial watercourse with lock, barrier, dam or weir
Non perennial watercourse with waterfall, rapids
Mainly Dry watercourse; Water supply canal
Waterbody: perennial, non perennial, mainly dry
Mean high water mark
Lighthouse or beacon; Breakwater
Wharf, launching ramp or slipway; Rock
Anchorage; Wreck
Intertidal flat; Rocks (awash); Reef
Rocks (inland); Sand; Cliff area
Swamp; wet, dry; Land subject to inundation
Trees: sparse, medium, dense
Orchard, vineyard or crop; Pine plantation; Mangrove
Park or reserve; Built up area;
State border; Cadastre with plan and lot number
State forest; National park
Suburb; Local government area
Restricted area

Disclaimer: The publisher of and/or contributors to this publication accept no responsibility for the accuracy, completeness, or relevance to the user's purpose or mission or errors therein, any injury, loss or damage arising from its use...
The 2022 edition of the Topographic GeoPDF may differ from previously produced versions of our map series.
Road and track information displayed in State Forest Areas on this map was supplied by Forestry Corporation of NSW.

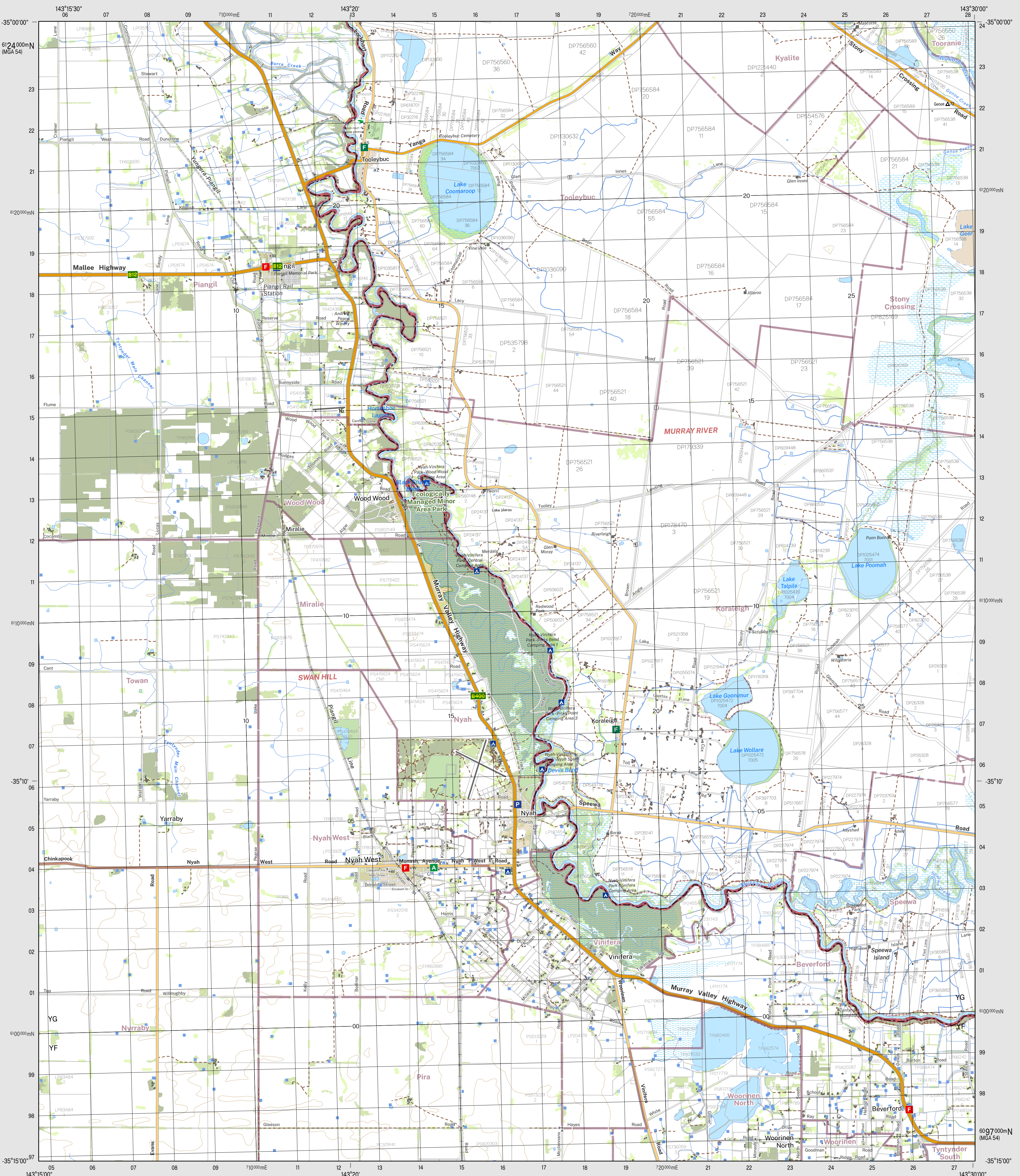
Topographic Map

TOOLEYBUC
1:50 000

7527-N
October 2022



GDA2020



TOOLEYBUC 7527-N

TOOLEYBUC 7527-N

TOOLEYBUC 7527-N

TOOLEYBUC 7527-N

THIS MAP MAY CONTAIN AUTOMATION ERRORS OR OMISSIONS.