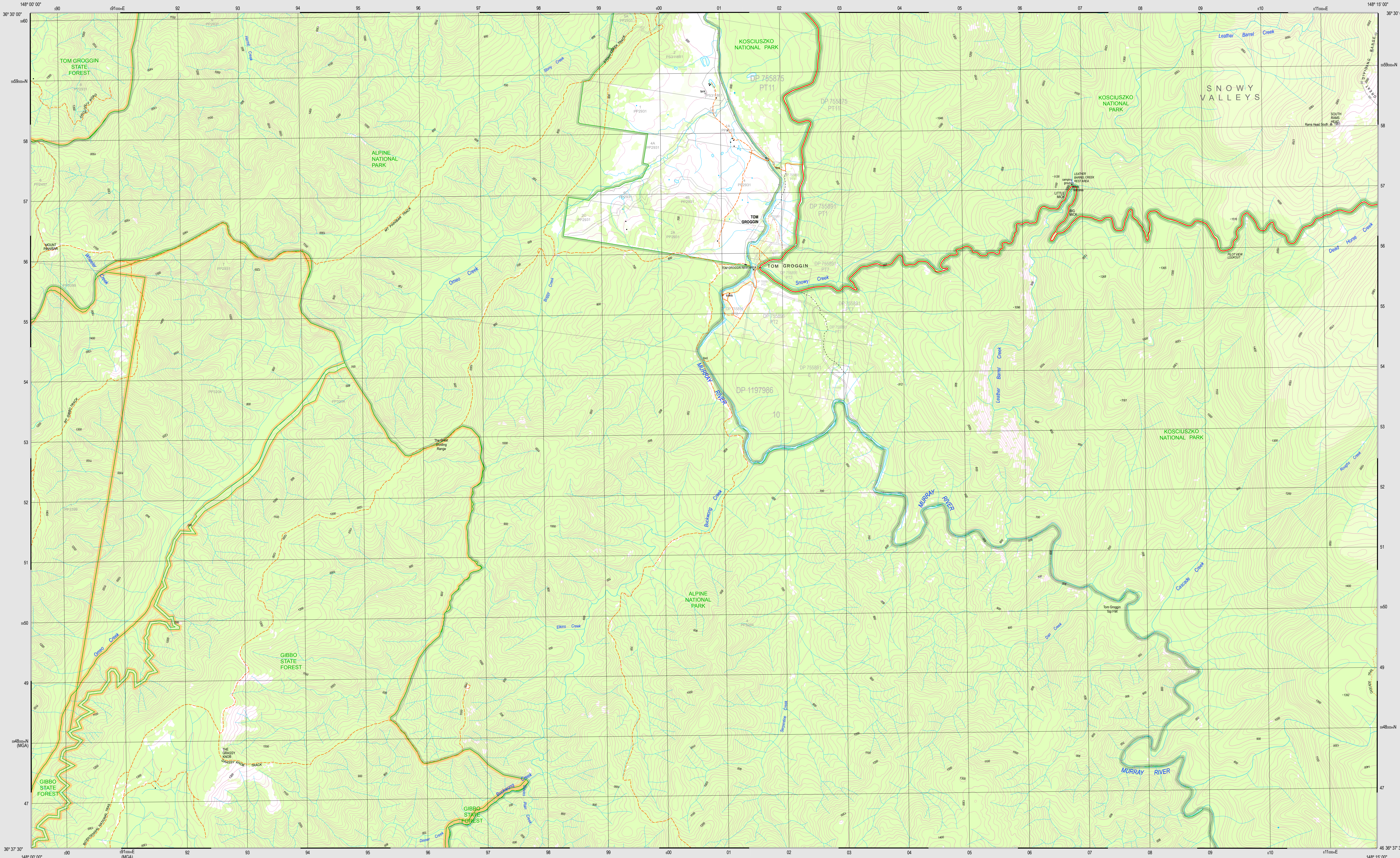


TOM GROGGIN 8524-4N

THIS MAP MAY CONTAIN AUTOMATION INDUCED ERRORS OR OMISSIONS.

TOM GROGGIN 8524-4N



SCALE 1:25000
 0 0.5 1 2 km
 CONTOUR INTERVAL 20 METRES
 Magnetic North is 1.1 degrees East of Grid North.
 © Department of Finance, Services and Innovation 2017.
 No part of this map may be reproduced without written permission.

- Built up area
- Route marker: Motorway, National Route
- Major road: paved (with State Route), unpaved
- Secondary road: paved, unpaved
- Minor road: paved (with Impediment), unpaved
- Vehicular track: Stock grid
- Four-wheel drive track: Gate
- Walking track
- Road tunnel: Crossing
- Railway, heavy: Station, Tunnel
- Railway, light: Railway, disused
- Landmark feature: Steepside, Mine
- Water tank or reservoir: Ground tank or dam
- Survey landmark (with height): Ancillary contour: Spot height
- Holy: 169
- Contours: Depression contour
- Contour with relative height: Rocky pinnacle
- Quarry or gravel pit: Levee or dyke
- Closed forest: 60-100% crown cover: Open forest: 50-60% crown cover
- Woodland: 20-50% crown cover: Pine forest
- Orchard, plantation or vineyard: Mangrove
- Power transmission line (33kV and above)
- Cableway
- Pipeline, water: Pipeline, other
- Perennial lake: Intermittent lake: Mainly dry lake
- Wet swamp: Dry swamp
- Land subject to inundation: Sand
- Intermittent stream, with waterfall
- Mainly dry stream: Perennial stream
- Large dam or weir
- Ferry route
- Lighthouse or beacon: Breakwater
- Jetty or wharf: Rock, bare or awash
- Slipway: Anchorage, Wreck
- Rock shelf: Reef
- Rocky shoreline: Intertidal flat
- Building, small: Building, large: Homestead
- Place of worship: School: State Emergency Service
- Ambulance station: Police station: Emergency headquarters
- Fire station: Telephone exchange: Post office
- Electricity substation, small: Electricity substation, large: Hospital
- Wind generator: Windpump, Rural fire station
- Cadastral deposited plan, lot number

BOUNDARIES

State Forest	Local Government	Mine Subdivision District
National Park	Cadastral	National Park, Nature Reserve or State Conservation Area
	State	

Disclaimer: The publisher of and/or contributors to this publication accept no responsibility for any injury, loss or damage arising from its use or errors or omissions therein. While all care is taken to ensure a high degree of accuracy, users are invited to notify any discrepancies and should use the map with care.
 The 2017 edition of the Topographic GeopDF may differ from the current printed version.
 Data extraction date: 9/2/2017.

Road and track information displayed in State Forest Areas on this map was supplied by Forests NSW.

© The State of Victoria 2017
 The State of Victoria and its suppliers do not warrant the accuracy or completeness of its information in this publication and any person using or relying upon such information does so on the basis that the State of Victoria shall bear no responsibility or liability whatsoever for any errors, faults, defects or omissions in the information.

TOM GROGGIN
8524-4N
 1: 25 000
GEOPDF TOPOGRAPHIC MAP
2017 EDITION

VICTORIA
 TOM GROGGIN 8524-4N
 DIVISION 4
 PERSEUS VALLEY 8524-25
 CHAMBERS RIDGE 8524-19
 CHARCOAL BANGS 8524-15

TRESPASS: Depiction of a road or track does not necessarily indicate a public right of way. Unlawful entry upon private land or a restricted area and/or willful damage of property such as gates and fences exposes offenders to legal prosecution.