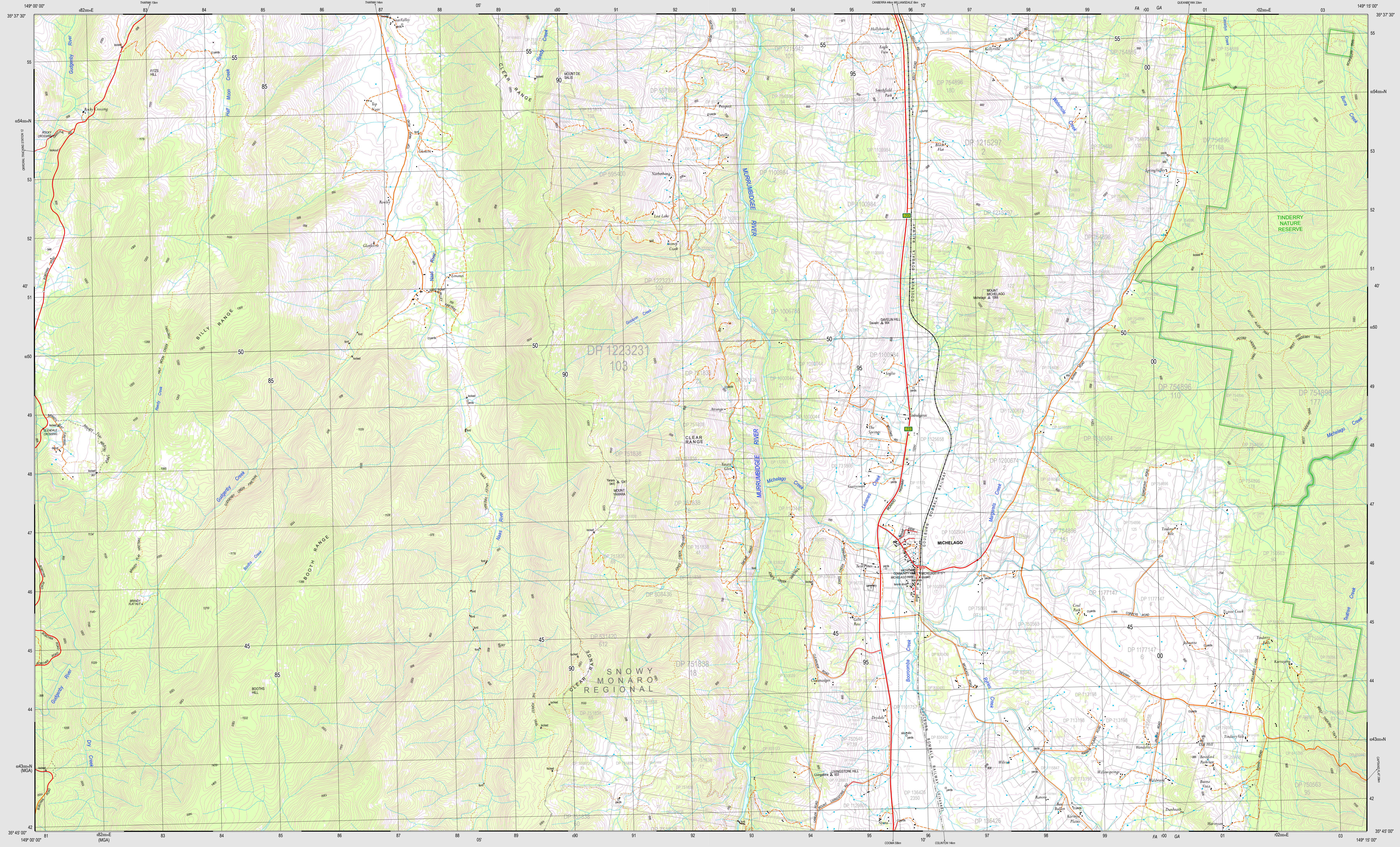


MICHELAGO 8726-4S

THIS MAP MAY CONTAIN AUTOMATION INDUCED ERRORS OR OMISSIONS.

MICHELAGO 8726-4S



SCALE 1:25000
 CONTOUR INTERVAL 10 METRES
 Magnetic North is 1.3° degrees East of Grid North.
 © Department of Finance, Services and Innovation 2017.
 No part of this map may be reproduced without written permission.

Legend:

- Built up area
- Route marker: Motoway, National Route
- Major road: paved (with State Route), unpaved
- Secondary road: paved, unpaved
- Minor road: paved (with Impediment), unpaved
- Vehicle track: Stock grid
- Four-wheel drive track: Gate
- Walking track
- Road tunnel: Crossing
- Railway, heavy: Station, Tunnel
- Railway, light: Railway, disused
- Landmark feature: Stockyards, Mine
- Water tank or reservoir: Ground tank or dam
- Survey landmark (with height)
- Spot height
- Contours: Depression contour
- Cliff, with relative height: Rocky pinnacle
- Quarry or gravel pit: Levee or dyke
- Closed forest: 80-100% crown cover. Open forest: 50-80% crown cover
- Woodland: 20-50% crown cover. Pine forest
- Orchard, plantation or vineyard: Mangrove
- Power transmission line (33kV and above)
- Cableway
- Pipeline, water: Pipeline, other
- Perennial lake, Intermittent lake, Mainly dry lake
- Wet swamp, Dry swamp
- Land subject to inundation: Sand
- Intermittent stream, with waterfall
- Mainly dry stream, Perennial stream
- Large dam or weir
- Ferry route
- Lighthouse or beacon, Breakwater
- Jetty or wharf, Rock, bars or awash
- Slipway, Anchorage, Wharf
- Rock shaft: Reef
- Rocky shoreline, Intertidal flat
- Building, small, Building, large, Homestead
- Place of worship, School, State Emergency Service
- Ambulance station, Police station, Emergency headquarters
- Fire station, Telephone exchange, Post office
- Electricity substation, small, Electricity substation, large, Hospital
- Wind generator, Windpump, Rural fire station
- Cadastral deposited plan, lot number

BOUNDARIES

- State Forest
- Local Government
- Mine Subdivision District
- Cadastra
- National Park, Nature Reserve or State Conservation Area
- State

Disclaimer: The publisher and/or contributors to this publication accept no responsibility for any injury, loss or damage arising from its use or errors or omissions therein. While all care is taken to ensure a high degree of accuracy, users are invited to notify any discrepancies and should use the map with due care.
 The 2017 edition of the Topographic GeOPDF may differ from the current printed version.
 Data extraction date: 9/9/2017.
 Road and track information displayed in State Forest areas on this map was supplied by Forests NSW.

MICHELAGO
8726-4S
 1:25 000
GEOPDF TOPOGRAPHIC MAP
2017 EDITION

Grid Reference Table:

OSWEN DAM 8265 IN	WILLIAMSDALE 8726 IN	GAPFANS FLAT 8726 IN
BEREVOLE CREEK 8726 IN	MICHELAGO 8726 IN	TINDERRY 8726 IN
WILSON 8726 IN	COLLATERAL 8726 IN	STRANGLER 8726 IN

TRESPASS: Depiction of a road or track does not necessarily indicate a public right of way. Unauthorised entry upon private land or a restricted area and/or willful damage of property such as gates and fences exposes offenders to legal prosecution.