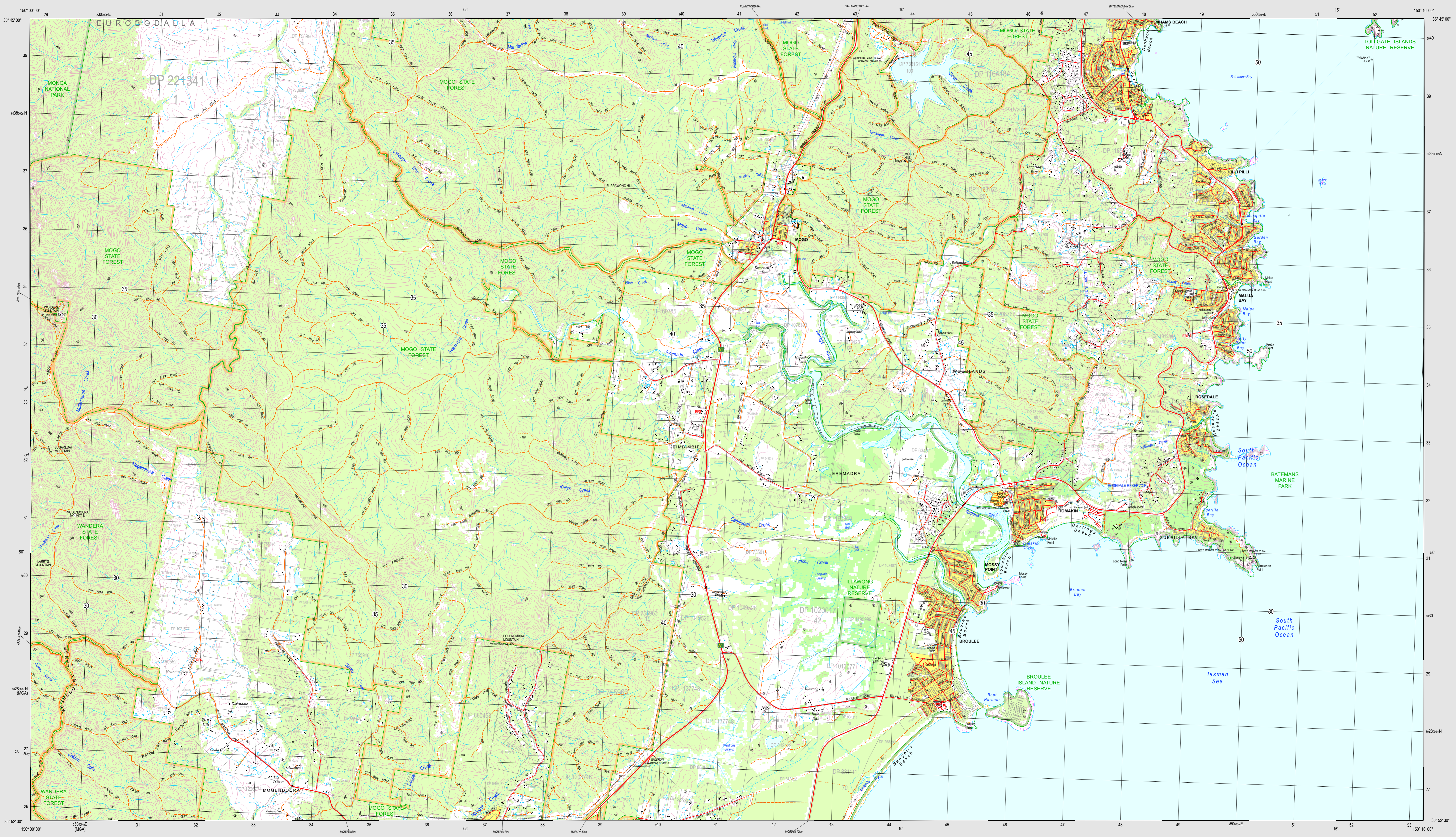


MOGO 8926-3N

THIS MAP MAY CONTAIN AUTOMATION INDUCED ERRORS OR OMISSIONS.

MOGO 8926-3N



SCALE 1:25000

CONTOUR INTERVAL: 10 METRES
Map scale is 1:25,000 based on GDA2011.

© Department of Finance, Services and Innovation 2017.
No part of this map may be reproduced without written permission.

	Built up area		Landmark feature: Stockyards, Mine
	Route marker: Motorway, National Route		Water tank or reservoir: Ground tank or dam
	Major road: paved (with State Route), unpaved		Survey landmark (with height)
	Secondary road: paved, unpaved		Ancillary contour: Spot height
	Minor road: paved (with Impediment), unpaved		Contours: Depression contour
	Vehicular track: Stock grid		Cliff: with relative height, Rocky pinnacle
	Four-wheel drive track: Gate		Quarry or gravel pit: Level or dyke
	Walking track		Closed forest: 80-100% crown cover, Open forest: 50-80% crown cover
	Road tunnel: Crossing		Woodland: 20-50% crown cover, Pine forest
	Railway, heavy: Station, Tunnel		Orchard, plantation or vineyard, Mangrove
	Railway, light: Station, Tunnel		Power transmission line (33kV and above)
	Cableway		Pipeline, water: Pipeline, other
	Perennial lake, Intermittent lake, Mainly dry lake		Wet swamp, Dry swamp
	Land subject to inundation: Sand		Intermittent stream, with waterfall
	Mainly dry stream, Perennial stream		Large dam or weir
	Ferry route		Lighthouse or beacon, Breakwater
	Jetty or wharf, Rock, bare or awash		Slipway, Anchorage, Wreck
	Rocky shoreline, Intertidal flat		Building, small, Building, large, Homestead
	Place of worship: School, State Emergency Service		Ambulance station, Police station, Emergency headquarters
	Fire station, Telephone exchange, Post office		Electricity substation, small, Electricity substation, large, Hospital
	Wind generator, Windpump, Rural fire station		Cadastral deposited plan, lot number

BOUNDARIES

	State Forest		Local Government
	Mine Subsidence District		Cadastral
	National Park, Nature Reserve or State Conservation Area		State

Disclaimer: The publisher and/or contributors to this publication accept no responsibility for any injury, loss or damage arising from its use or errors or omissions therein. While all care is taken to ensure a high degree of accuracy, users are invited to notify any discrepancies and should use this map with due care.
The 2017 edition of the Topographic GeoPDF may differ from the current printed version.
Data extraction date: 06/02/17

Read and track information displayed in State Forest Areas on this map was supplied by Forests NSW.

MOGO

8926-3N

1:25 000

GEOPDF TOPOGRAPHIC MAP

2017 EDITION

TRESPASS: Depiction of a road or track does not necessarily indicate a public right of way. Unlawful entry upon private land or a restricted area and/or willful damage of property such as gates and fences exposes offenders to legal prosecution.

ARARUEN 8926-15	MULLUMBAIDIE 8926-14	COFFS HARBOUR 8926-13
BURRUMBLE 8926-10	MOGO 8926-3N	MURUMBidgegon 8926-09
BENDERSHIRE 8926-08	MURUMBidgegon 8926-07	

MOGO 8926-3N