

- Built up area
- Route marker: Motownay, National Route
- Major road: paved (with State Route), unpaved
- Secondary road: paved, unpaved
- Minor road: paved (with Impediment), unpaved
- Vehicular track: Stock grid
- Four-wheel drive track: Gate
- Walking track
- Road tunnel: Crossing
- Railway, heavy: Station, Tunnel
- Railway, light: Railway, disused
- Landmark feature: Stockyards, Mine
- Water tank or reservoir: Ground tank or dam
- Survey landmark (with height)
- Ancillary contour: Spot height
- Contours: Depression contour
- Cliff, with relative height: Rocky pinnacle
- Quarry or gravel pit: Levee or dyke
- Closed forest: 80-100% crown cover. Open forest: 50-80% crown cover
- Woodland: 20-50% crown cover. Pine forest
- Orchard, plantation or vineyard: Mangrove
- Power transmission line (33kV and above)
- Pipeline, water. Pipeline, other
- Perennial lake. Intermittent lake. Mainly dry lake
- Wet swamp. Dry swamp
- Land subject to inundation. Sand
- Intermittent stream, with waterfall
- Mainly dry stream. Perennial stream
- Large dam or weir
- Ferry route
- Lighthouse or beacon. Breakwater
- Jetty or wharf. Rock, bars or awash
- Slipway. Anchorage. Wharf
- Rock shelf: Reef
- Rocky shoreline. Intertidal flat
- Building, small. Building, large. Homestead
- Place of worship. School. State Emergency Service
- Ambulance station. Police station. Emergency headquarters
- Fire station. Telephone exchange. Post office
- Electricity substation, small. Electricity substation, large. Hospital
- Wind generator. Windpump. Rural fire station
- Cadastral deposited plan, lot number

- BOUNDARIES**
- State Forest
  - Local Government
  - Mine Subdivision District
  - Cadastral
  - National Park, Nature Reserve or State Conservation Area
  - State

Disclaimer: The publisher of and/or contributors to this publication accept no responsibility for any injury, loss or damage arising from its use or errors or omissions therein. While all care is taken to ensure a high degree of accuracy, users are invited to notify any discrepancies and should use the map with due care.  
The 2017 edition of the Topographic GeoPDF may differ from the current printed version.  
Data extraction date: 9/9/2017.  
Road and track information displayed in State Forest Areas on this map was supplied by Forest NSW.

# UPPER BINGARA

9037-4N  
1:25 000

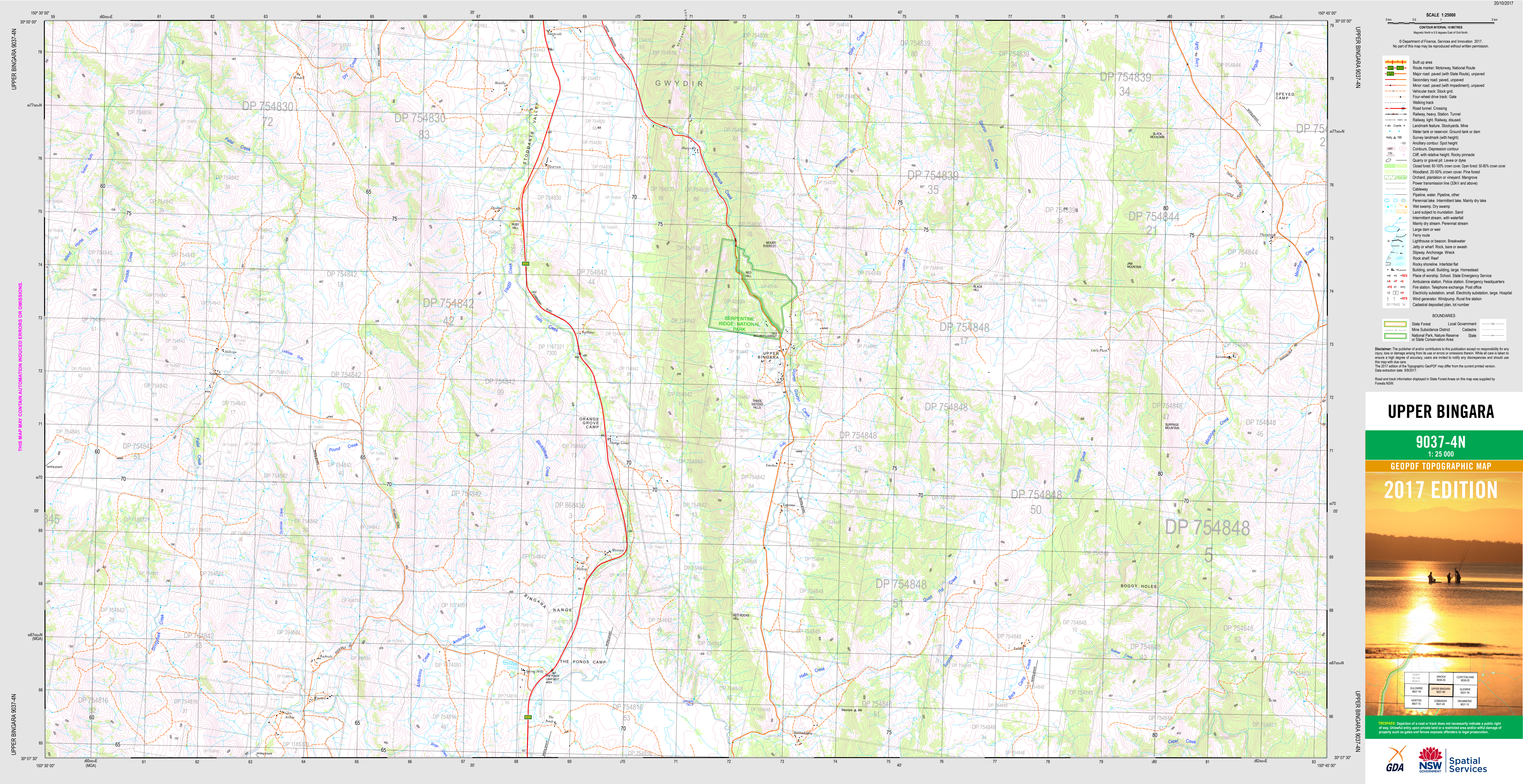
GEOPDF TOPOGRAPHIC MAP

## 2017 EDITION



HEPPE 8815-15	DINGA 8815-35	COFFETON DAM 8815-55
ELLOWRE 8815-15	UPPER BINGARA 8815-35	GLENNIE 8815-55
HORTON 8815-15	COBBERON 8815-35	DUMMOND 8815-55

TRESPASS: Depiction of a road or track does not necessarily indicate a public right of way. Unauthorised entry upon private land or a restricted area and/or willful damage of property such as gates and fences exposes offenders to legal prosecution.



THIS MAP MAY CONTAIN AUTOMATION INDUCED ERRORS OR OMISSIONS.

UPPER BINGARA 9037-4N

UPPER BINGARA 9037-4N